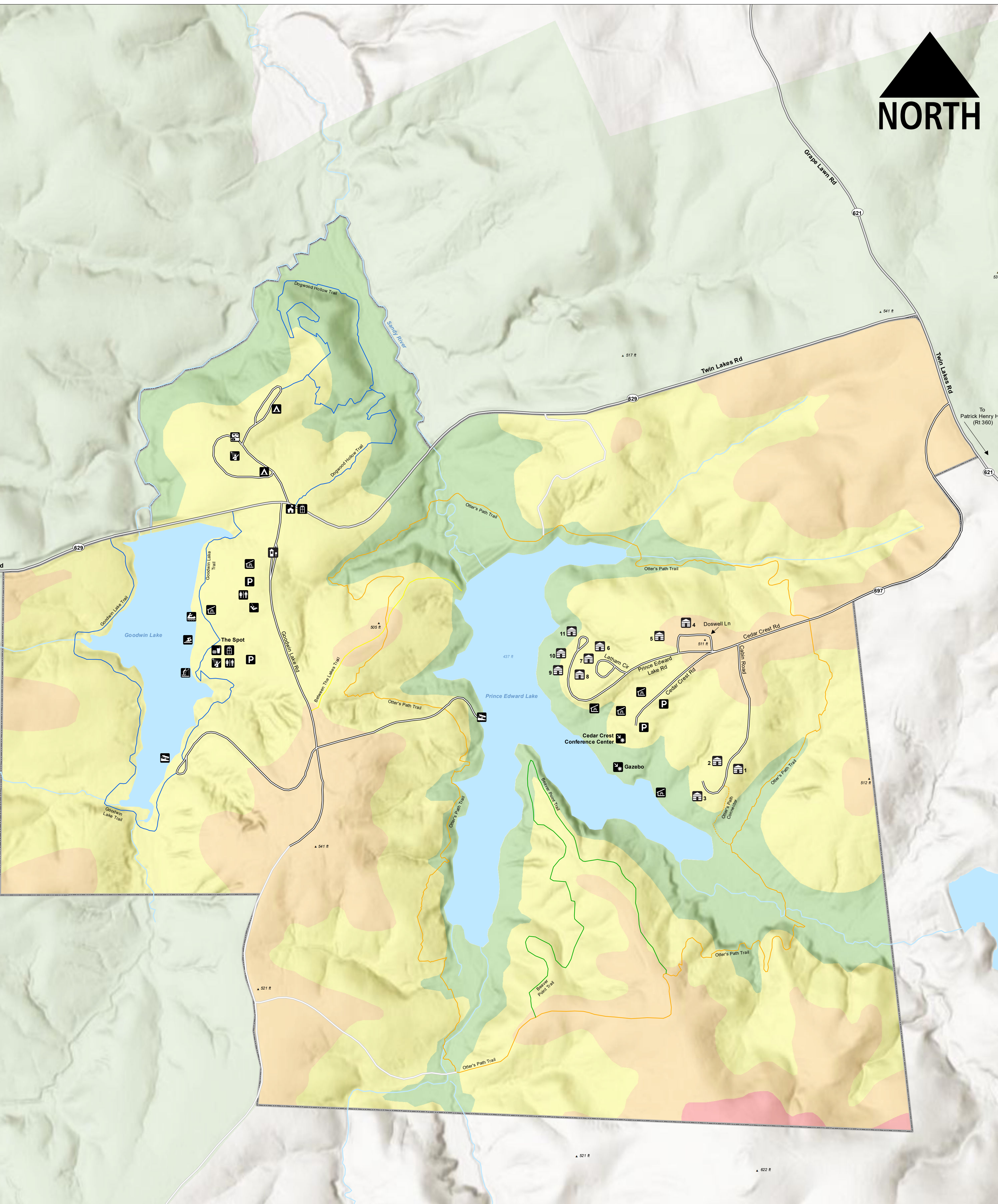




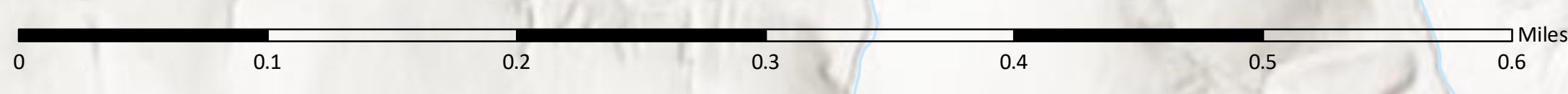
Twin Lakes State Park



Trails

Trail Name	Mileage	Usage	Difficulty	Blaze Color
Beaver Point	0.8	H	Easy	Green
Between The Lakes	0.3	H	Easy	Yellow
Dogwood Hollow	0.9	H	Easy	Blue
Goodwin Lake	1.1	H	Easy	Blue
Otter's Path	2.9	H, B	Moderate	Orange
Otter's Path Connector	0.1	H, B	Difficult	Orange

H = Hiking B = Biking E = Equestrian
 ● = Easy ■ = Moderate ◆ = Difficult



www.virginiastateparks.gov
 1-800-933-7275

Sources: Esri, USGS, NGA, NASA, CGIAR, N Robinson, NCEAS, NLS, OS, NMA, Geodatasystemen, Rijkswaterstaat, GSA, Geoland, FEMA, Intermap and the GIS user community

Legend

	Boat Ramp		Park Office		Main Road		400 - 450 ft above sea level
	Boat Rental		Parking		Park Road		450 - 500 ft above sea level
	CCC Picnic Shelter		Picnic Shelter		Forest Road		500 - 550 ft above sea level
	Cabin		Playground		Streams		550 - 600 ft above sea level
	Campsite		Restroom		Prince Edward-Gallion State Forest		Twin Lakes State Park Boundary
	Conference Center		Sanitary Disposal Station				
	Contact Station		Shower / Bathhouse				
	Fishing Pier		Swim Complex				
	Gazebo		Swimming				
	Gifts / Shopping						