

## Other Curriculum

In addition to park-specific programs, our staff is also able to provide programs based on students' learning needs by utilizing the following nationally recognized environmental education curricula:

### Project WET

<https://www.projectwet.org/>

### Project WILD

<https://www.fishwildlife.org/projectwild>

### Project Learning Tree

<https://www.plt.org/>

## Life Skills

The park can also provide activities with a focus on health, fitness, and outdoor survival skills. Please inquire.

### **ADDITIONAL INFORMATION**

- The meeting area for all activities except for archery will have restroom facilities nearby.
- It is recommended that participants wear comfortable walking shoes with a covered toe.
- Participants should bring water, and a snack.

**To schedule an activity or get more information on specific activities, please contact:**  
**[bguide@dcr.virginia.gov](mailto:bguide@dcr.virginia.gov)**  
**or call (804)492-5919**

## Hands-On, Mind-On

Students perform better with tactile reinforcement of lessons learned online or in classroom education. Participants in Bear Creek Lake State Park's Field and STREAM Trips receive grade-level activities supporting VA Standards of Learning.

Activities are available only through advance registration at least two weeks prior. They can be requested March through May and August through October on Tuesdays, Wednesdays, or Thursdays.

Sessions will be held outdoors. In the event of precipitation, or extreme cold or hot air temperatures, a session will be rescheduled or cancelled.

Students with special needs are welcome. We do require that they are accompanied by a qualified caregiver.

Parking is free for vehicles participating in an official activity of a formal or home school. If not in marked vehicles, participants should have a letter or card verifying school affiliation. For homeschool groups, proof of homeschool status such as current ID card from a state or national homeschool organization (HEAV, HSLDA, etc.) or a copy of the letter from the school district that acknowledges "Notice of Intent" to homeschool for that school year is required.



**Bear Creek Lake State Park**  
22 Bear Creek Lake Road  
Cumberland, VA 23040  
Phone 804-492-4410

## *Virginia State Parks*

### **BEAR CREEK LAKE Cumberland, VA**



### **2023 Field and STREAM Trips**

**Environmental and Outdoor Skills  
Activities and  
Nature-Based Enhancement Trips  
for Formal and Home School  
Groups**



[www.virginiastateparks.gov](http://www.virginiastateparks.gov)

## ACTIVITIES

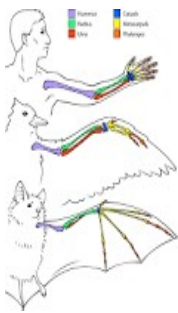
**HOW LONG?** All activities are about 90 minutes in duration, except where noted.

**WHO FOR?** Age categories are provided as a guideline. Programs designed for different age groups may be able to be offered concurrently. Specific Virginia SOL correlations are available by request.

**COST.** All programs and activities are free of charge with the exception of "M" is for Archery which has a \$4 equipment fee for each person that shoots a bow. Others can audit for free.

\*\* denotes activities that can be provided as a one-time activity, or as a recurring activity with increasing levels of skills and awareness.

### A Lot Alike — All ages.



By using bones and replicas to look at the physical structure of humans, other mammals, reptiles and birds, we can understand the habitats they prefer and their requirements for survival. With such knowledge, the group will express ways we can work towards good stewardship of the earth.

Students should bring pens or pencils in at least six different colors.

### Critter Specific — All ages.

These 60 minute programs feature animal species that live in the Virginia piedmont.

The Beauty of Beavers.

Spectacular Snakes.

Bear Necessities.

\*\* **Cub Club** — Ages 4 to 7 years old. Participants will engage in age appropriate activities to explore and find a relationship with the forest. Life cycles, species recognition, scavenger hunts, and more, help to promote observation and learning skills. They'll be shown ways that natural elements can be used by humans, and schooled in the importance of the other- than- human members of the forest community.

### **Field and STREAM** — Ages 10 to 17. An introduction to scientific field studies.

1. Macroinvertebrate sampling and water quality assessment. To include: macro invertebrate collection and identification; chemical water testing; results compilation and analysis.
2. Forest assessment techniques and species identification. To include: Assessing height, diameter, and age of selected trees; utilizing a dichotomous key or other observations to correctly identify several tree species; compare plant/forest communities as a part of habitat assessment.

Each of the two activities is provided separately, but groups can register for both activities in a single day. As a component of the activity, time will be spent on written and/or artistic journaling. Testing equipment and data sheets are provided. Participants need to bring their own pencils/pens and notebooks.



### \*\* **Homing In** — Ages 8 to 17.

After an overview of latitude and longitude, and how satellite-based communication systems work, students will use that technology to find a specific location.

That location will be the site for a program highlighting a plant community, a geologic formation, or the habitat of a specific animal. Students will then record the site's coordinates and other pertinent information as a part of collecting scientific data. Familiarity with these tools can provide a jump start into a variety of science-based careers. Students must provide their own note-taking and sketching materials. GPS units will be provided.

### **How a Forest Grows** — All ages.

This 60 minute walk program explores the park's secondary succession piedmont forest ecology. Concepts covered are how the structure and composition of forests change over time, the ecological interactions between organisms in a forest, and how human impact affects forest health.

### **"M" as in Archery** — Ages 10 to 17.

The sport of archery is based on mathematic principles, including physics. As a part of basic archery instruction, students will come to understand real-world applications of terms such as trajectory, kinetic and potential energy, density, and the geometry found in body stance. Time will be allocated to determine values based on means/median/mode concepts, as well as skills such as distance estimating. This activity is overseen by an instructor certified by USA Archery.

All equipment is provided. Participants should bring writing materials. Restrooms and running water are not available at the range so participants should bring water, and a snack.

For those in the group who are too young to participate in this program, the Channel Cat Trail is nearby to provide a self-guided hike led by a responsible adult.