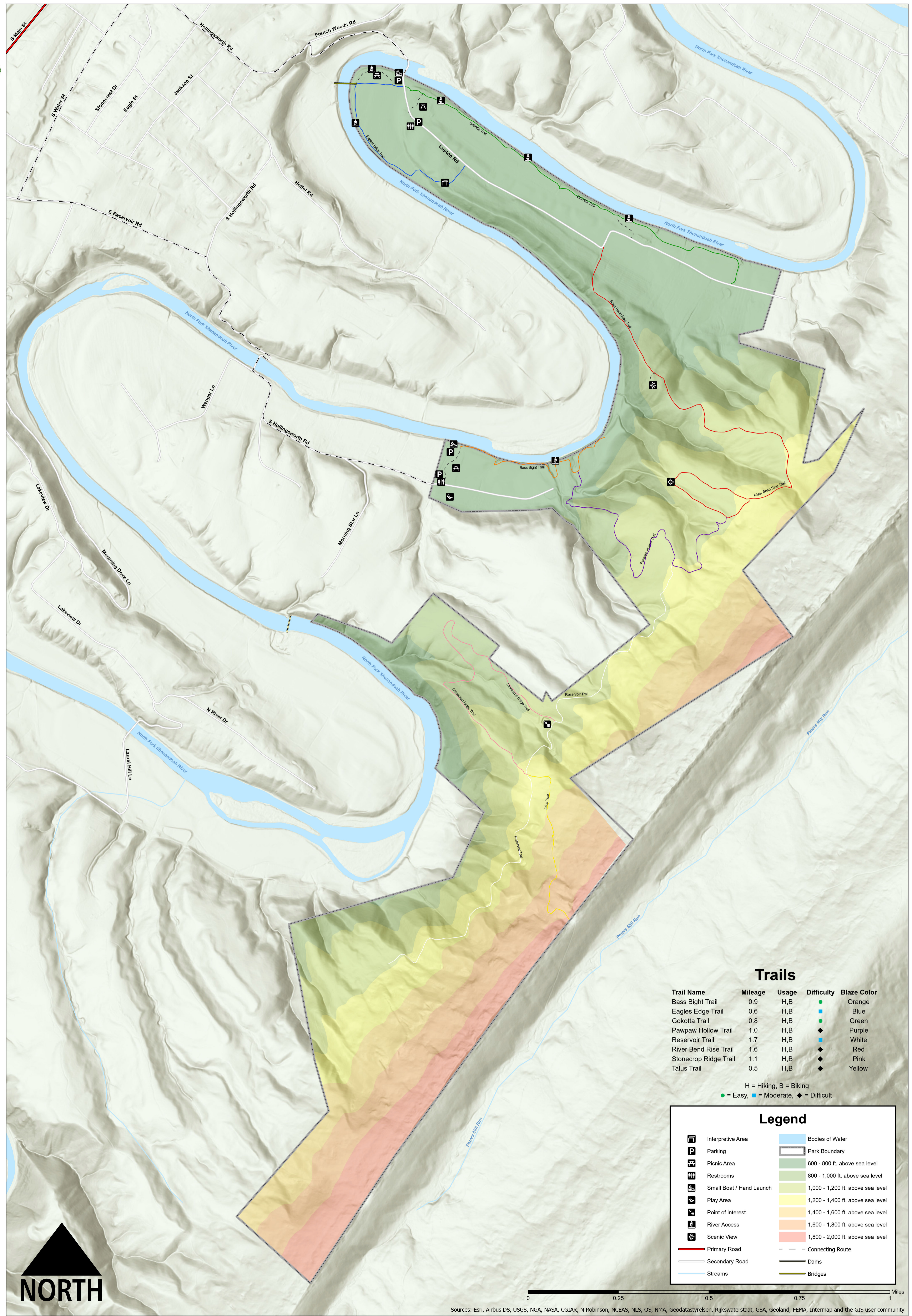


Seven Bends State Park



Trails

Trail Name	Mileage	Usage	Difficulty	Blaze Color
Bass Bight Trail	0.9	H,B	●	Orange
Eagles Edge Trail	0.6	H,B	■	Blue
Gokotta Trail	0.8	H,B	●	Green
Pawpaw Hollow Trail	1.0	H,B	◆	Purple
Reservoir Trail	1.7	H,B	■	White
River Bend Rise Trail	1.6	H,B	◆	Red
Stonecrop Ridge Trail	1.1	H,B	◆	Pink
Talus Trail	0.5	H,B	◆	Yellow

H = Hiking, B = Biking
 ● = Easy, ■ = Moderate, ◆ = Difficult

Legend

	Interpretive Area		Bodies of Water
	Parking		Park Boundary
	Picnic Area		600 - 800 ft. above sea level
	Restrooms		800 - 1,000 ft. above sea level
	Small Boat / Hand Launch		1,000 - 1,200 ft. above sea level
	Play Area		1,200 - 1,400 ft. above sea level
	Point of Interest		1,400 - 1,600 ft. above sea level
	River Access		1,600 - 1,800 ft. above sea level
	Scenic View		1,800 - 2,000 ft. above sea level
	Primary Road		Connecting Route
	Secondary Road		Dams
	Streams		Bridges