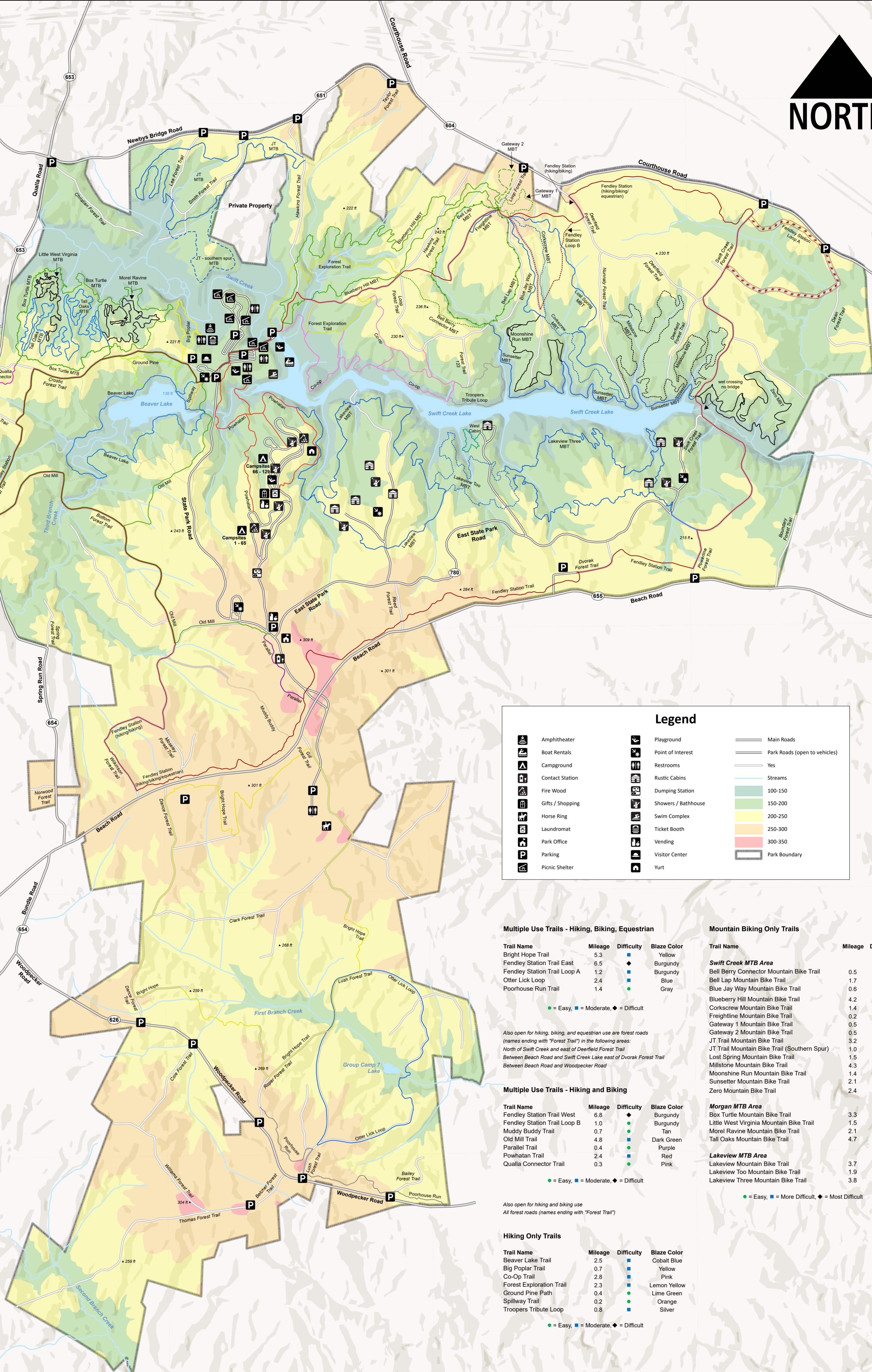




# Pocahontas State Park



### Legend

	Amphitheater		Playground		Main Roads
	Boat Rentals		Point of Interest		Park Roads (open to vehicles)
	Campground		Restrooms		Yes
	Contact Station		Rustic Cabins		Streams
	Fire Wood		Dumping Station		100-150
	Gifts / Shopping		Shows / Bathroom		150-200
	Horse Ring		Ticket Booth		200-250
	Laundromat		Vending		250-300
	Park Office		Visitor Center		300-350
	Parking		Yurt		Park Boundary
	Picnic Shelter				

### Multiple Use Trails - Hiking, Biking, Equestrian

Trail Name	Mileage	Difficulty	Blaze Color
Bright Hope Trail	5.3	◆	Yellow
Fendley Station Trail East	6.5	◆	Burgundy
Fendley Station Trail Loop A	1.2	◆	Burgundy
Otter Lick Loop	2.4	◆	Blue
Poorhouse Run Trail	1.4	◆	Gray

● = Easy, ■ = Moderate, ◆ = Difficult

Also open for hiking, biking, and equestrian use are forest roads (names ending with "Forest Trail") in the following areas:  
 North of Swift Creek and east of Deerfield Forest Trail  
 Between Beach Road and Swift Creek Lake east of Dvorak Forest Trail

### Multiple Use Trails - Hiking and Biking

Trail Name	Mileage	Difficulty	Blaze Color
Fendley Station Trail West	6.8	◆	Burgundy
Fendley Station Trail Loop B	1.0	◆	Burgundy
Muddy Buddy Trail	0.7	◆	Tan
Old Mill Trail	4.8	◆	Dark Green
Parallel Trail	4.4	◆	Purple
Powhatan Trail	2.4	◆	Red
Qualla Connector Trail	0.3	◆	Pink

● = Easy, ■ = Moderate, ◆ = Difficult

Also open for hiking and biking use  
 All forest roads (names ending with "Forest Trail")

### Hiking Only Trails

Trail Name	Mileage	Difficulty	Blaze Color
Beaver Lake Trail	2.5	■	Cobalt Blue
Big Poplar Trail	0.7	■	Yellow
Co-Op Trail	2.8	■	Pink
Forest Exploration Trail	2.3	■	Lemon Yellow
Ground Pine Path	0.4	■	Lime Green
Spillway Trail	0.2	■	Orange
Troopers Tribute Loop	0.8	■	Silver

● = Easy, ■ = Moderate, ◆ = Difficult

### Mountain Biking Only Trails

Trail Name	Mileage	Difficulty
<b>Swift Creek MTB Area</b>		
Bell Berry Connector Mountain Bike Trail	0.5	●
Bell Lap Mountain Bike Trail	1.7	●
Blue Jay Way Mountain Bike Trail	0.6	■
Blueberry Hill Mountain Bike Trail	4.2	◆
Corkscrew Mountain Bike Trail	1.4	■
Freightline Mountain Bike Trail	0.2	■
Gateway 1 Mountain Bike Trail	0.5	●
Gateway 2 Mountain Bike Trail	0.5	●
JT Trail Mountain Bike Trail	3.2	◆
JT Trail Mountain Bike Trail (Southern Spur)	1.0	■
Lost Spring Mountain Bike Trail	1.5	■
Millstone Mountain Bike Trail	4.3	◆
Moonshine Run Mountain Bike Trail	1.4	◆
Sunsetter Mountain Bike Trail	2.1	◆
Zero Mountain Bike Trail	2.4	◆

Trail Name	Mileage	Difficulty
<b>Morgan MTB Area</b>		
Box Turtle Mountain Bike Trail	3.3	●
Little West Virginia Mountain Bike Trail	1.5	◆
Morel Ravine Mountain Bike Trail	2.1	◆
Tall Oaks Mountain Bike Trail	4.7	■

● = Easy, ■ = More Difficult, ◆ = Most Difficult



www.virginiastateparks.gov  
 1-800-933-7275

Source: Esri, Airbus DS, USGS, NGA, NASA, CGIAR, N Robinson, NCEAS, NLS, OS, NMA, Geodatasystresen, Rijkswaterstaat, GSA, Geoland, FEMA, Intermap, and the GIS user community