

VIRGINIA NRCS RUSLE2 QUICK GUIDE

Installing RUSLE2 Software on Non-USDA Computers in Virginia

Revised 02/02/16 by Chris Lawrence, NRCS State Cropland Agronomist, Richmond, VA (chris.lawrence@va.usda.gov or 804/287-1680)

The purpose of these instructions is to enable Virginia RUSLE2 users on NON-USDA computers to load the same RUSLE2 software and data currently in use by NRCS Field Office personnel in Virginia. Starting in late 2014, a new version of RUSLE2 (2.5.2.11) is in use in all NRCS Field Offices nationwide. If you have a previous version of RUSLE2 installed, remove it before following these instructions. These instructions work for "typical" non-USDA PCs in Virginia. If your computer situation is not typical, it will be up to you to figure out how to adjust these instructions to fit your needs.

STEP A. PROTECT OLD RUSLE2 WORK & UNINSTALL OLD VERSION - OPTIONAL

If you have never used RUSLE2 before, skip to Step B below!

1. Do you have old work to protect?

If you have been using RUSLE2 and want to save your previous work for future reference, your first task is to find and save a copy of the "moses" database you have been using. The instructions below will provide you with a completely new database. So think carefully: do you really have past work worth protecting? If you don't, skip to Step A.4. If you have work worth saving, proceed to Step A.2. below.

2. Find your current RUSLE2 moses database

Open RUSLE2 the way you normally do. Investigate content of the database you are currently reading (calculations, managements, etc.) to make sure it is the one you want to save. Now look at the bottom right-hand corner of the gray RUSLE2 screen to find the name of the current moses database file. Right-click on the name of the database file and select "Properties". This should tell you the location of the moses file on your computer. Make a note of the location. (Note: if you have customized your own printing templates, etc., you will also need to save copies of those. That is an advanced topic not addressed in this document).

3. Save a copy of your current RUSLE2 moses database

Navigate to the location of your current moses database noted above. Save a copy to another safe location on your computer where you can easily find it again. Rename the copy so you can easily identify it and so that you know it was associated with your previous RUSLE2 work.

4. Uninstall RUSLE2 software

Use standard software uninstall procedures to remove the old RUSLE2 program. Remove all existing shortcuts to RUSLE2, etc. from your desktop, etc. to minimize confusion.

STEP B. FIND & RUN THE RUSLE2 INSTALLER

1. Find the RUSLE2 program installer on the official NRCS RUSLE2 website at Purdue University.

Go to http://fargo.nserl.purdue.edu/rusle2_dataweb/RUSLE2_Index.htm. On left-hand menu under “RUSLE2 Program File,” click “Download File” link. The installer is likely the only “.exe” file you will see (currently the file name is “Rusle2InstallerNRCS(2.5.2.11)b2014.exe”).

2. Run the RUSLE2 installer, making note of installation directories.

Double-click to run the installer directly from the Purdue R2 website or save the installer to your desktop, then run the installer from your desktop.

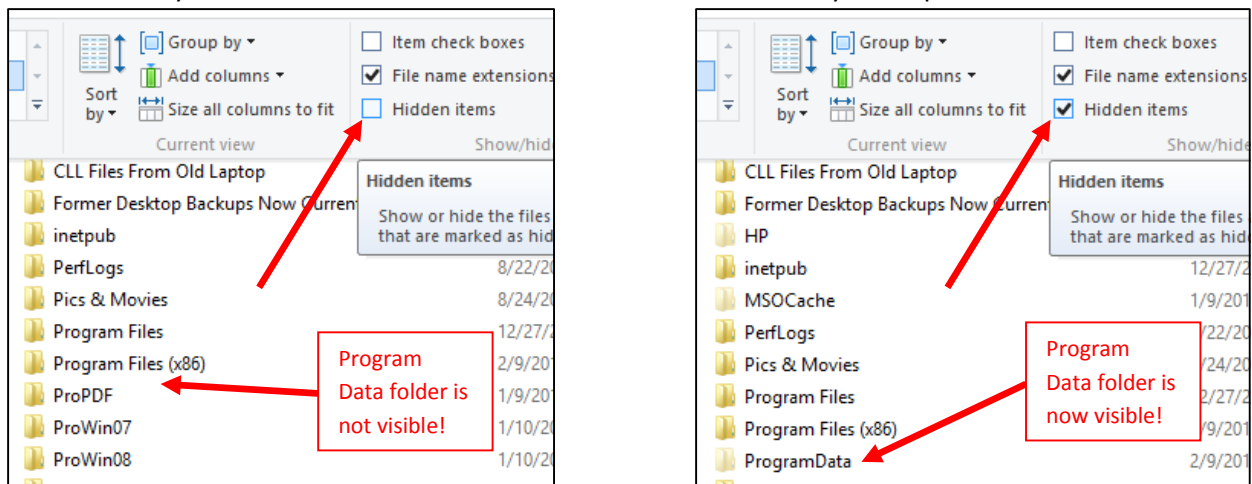
Accept default installation settings, including default installation directory or folder. I recommend accepting the options to put a RUSLE2 icon on your desktop and/or Start menu.

Make sure you fully explore and understand where the RUSLE2 software and data has been installed on your machine. For example, on my personal Windows 8 PC:

- The new RUSLE2 software is installed to a directory called: “C:\Program Files (x86)\USDA\Rusle2\NRCS”. This is what I call my “RUSLE2 Software Folder”.
- The associated RUSLE2 database, templates, and other files that the software will utilize to run calculations are installed to a directory called: “C:\Program Data\USDA\Rusle2\NRCS”. This is what I call my “RUSLE2 Data Folder.”

3. Create a desktop shortcut to your RUSLE2 Data Folder

Navigate to your RUSLE2 Data Folder. On my personal Windows 8 PC, this location is “C:\Program Data\USDA\Rusle2\NRCS”. Be aware that on some machines, the Program Data folder will be hidden! If you suspect that is the case on your machine, go to the VIEW tab and uncheck or otherwise modify settings as needed so you can see this folder. Below are screenshots that may be helpful.



Place a shortcut to your RUSLE2 Data Folder on your desktop (one way to do this: highlight the target folder, then right-click, then choose “Send To... Desktop (create shortcut)”). You will use this shortcut to your RUSLE2 Data Folder in next steps below. Change the name of the shortcut to “RUSLE2 Data Folder”.

4. Make sure RUSLE2 will start

If the new RUSLE2 didn’t already start, use your desktop or start menu icon to start RUSLE2. Cancel or say “no” to any dialog boxes that might pop up. Once the gray RUSLE2 screen opens, look for the name of the active moses database in the bottom righthand corner of your RUSLE2 screen. This will probably say “moses” or “moses” followed by numbers. Close RUSLE2.

STEP C. DOWNLOAD CUSTOMIZED RUSLE2 DATA FOR VIRGINIA

1. Save latest Virginia moses database to your RUSLE2 hard drive folder

This link should take you to the target file:

<http://efotg.sc.egov.usda.gov/references/public/VA/moses.va.allVA.2015.Jan.zip>

(If this link doesn't work, see Step 3 below). This zipped file called "moses.va.allVA.2012.Nov.zip" contains data that can only be read by RUSLE2. Do not open it. Save it into your RUSLE2 hard drive folder (use the new shortcut to this folder on your desktop).

2. Save latest Virginia RUSLE2 hard drive data update to your RUSLE2 hard drive folder

This link should take you to the target file

<http://efotg.sc.egov.usda.gov/references/public/VA/VA.Hard.Drive.Folder.Update.2015.Jan.zip>

(If this link doesn't work, see Step 3 below). This zipped file called "VA.Hard.Drive.Folder.Update.2015.Jan.zip" contains data that can only be read by RUSLE2. Do not open it. Save it into your RUSLE2 hard drive folder (use the new shortcut on your desktop).

3. If the above links don't work...

Navigate to the Virginia NRCS Electronic Field Office Technical Guide (eFOTG), Section I (one starting point: http://efotg.sc.egov.usda.gov/efotg_locator.aspx?map=US). Go to "Erosion Information" → "2. Water Erosion" → "b. Sheet & Rill Erosion / RUSLE2" → "ii. VA RUSLE2 Latest Updates".

STEP D. UNZIP CUSTOMIZED RUSLE2 DATA FOR VIRGINIA

1. Open your RUSLE2 hard drive folder

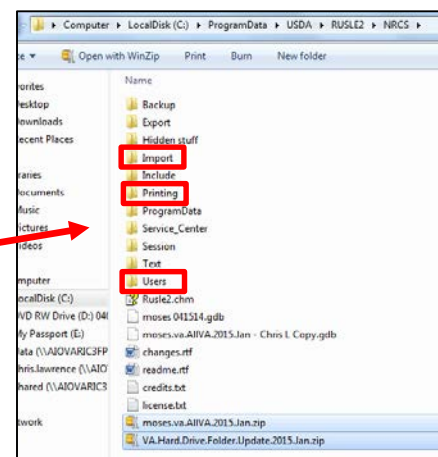
Open your RUSLE2 hard drive folder into which you have saved the two zipped 2015 Virginia RUSLE2 data files. Use shortcut on desktop that you created in Step B3., above. The folder contents now should look something like this (sorted by file type with zipped files last):

2. Delete the Import, Printing, and Users folders

Delete the three folders highlighted in red at right

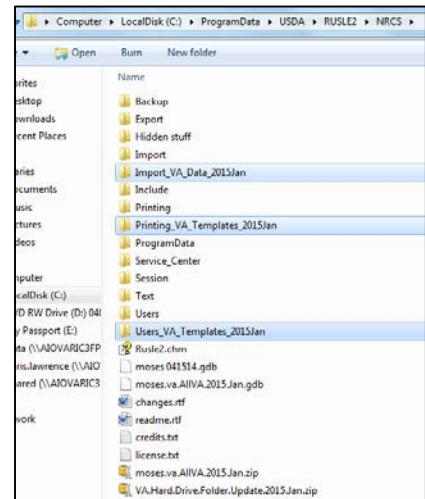
3. Unzip "moses.va.allVA.2015.Jan.gdb"

Recommended method is right-click on the zipped file, then select "WinZip... Extract to here". Other methods may be used. When complete, there should be a file in your RUSLE2 hard drive folder called "moses.va.allVA.2015.Jan.gdb". This RUSLE2 database contains all climates, soils, crop management files, and other base RUSLE2 data currently in use by NRCS in VA. This is your new moses database. Modify the name if you want to customize it. RUSLE2 does not care what you name the file. Do not double-click on or attempt to open the ".gdb" file – it can only be read from within the RUSLE2 software.



4. Unzip “2012_VA_R2_CDRIVE_UPDATE.zip” to create three new VA-specific RUSLE2 subfolders

Recommended method is to right-click the zipped file, then select “WinZip... Extract to here”. Other methods may be used. When complete, your RUSLE2 hard drive folder should contain three new VA-specific subfolders containing RUSLE2 import data and printing and user templates currently in use by NRCS in VA. Sort folder contents by name. Now folder should look something like what you see at right:



5. Rename new folders

Rename “Import_VA_Data_2015Jan” with new name “Import.”
Rename “Printing_VA_Templates_2015Jan” with new name “Printing.”
Rename “Users_VA_Templates_2015Jan” with new name “Users.”

6. Delete zipped files from RUSLE hard drive folder

To minimize clutter and potential confusion, delete the two zipped files once above steps are complete.

7. Close folders and return to your desktop

STEP E. START RUSLE2 & FINALIZE SETUP

1. Start new version of RUSLE2.

2. Select your new mooses database as your active database.

- From the Database menu (top left), choose “Open Alternate”.
- Select your new mooses database (called “moses.va.allVA.2015.Jan.gdb” or whatever you named it in Step D.3. above.)
- Check that the name of the new database now shows in bottom right-hand corner of gray RUSLE2 screen.

3. Make your new mooses database your Startup database.

Go back to the Database menu (top left) and select “Startup Database”. From this point forward, RUSLE2 should automatically look for the new database whenever you start the program.

4. Verify that User Template selection is VA Basic User Template 2012 Nov.

The RUSLE2 User Template controls the appearance of your screen (how simple or complex it is). The name of the active User Template is shown just to the left of the active mooses database name in the bottom right-hand corner of the RUSLE2 screen. If it does not say “VA Basic User Template 2012 Nov,” follow these steps:

- Right-click on the active User Template name, then select “Load”.
- Choose “VA Basic User Template 2012 Nov”.
- Verify that User Template selection is now VA Basic User Template 2012 Nov.

STEP F. ACCESSING YOUR OLD DATABASE – OPTIONAL

Do this only if you saved a copy of your old RUSLE2 database in Steps A.2. & 3. above!

1. Move a copy of your old RUSLE2 database to your new RUSLE2 Data Folder

If you saved a copy of your “old” RUSLE2 mooses database (Step A.3.), find it and move it to your new RUSLE2 Database Folder using the desktop shortcut. Make sure your old and new databases have different file names so you can tell them apart.

2. How to open your old RUSLE2 database.

From within RUSLE2, go to “Database” menu, select “Open Alternate”. Now open your old database. Make sure the intended database is listed as the active moses database in the bottom right corner of RUSLE2 screen. You can use this method to toggle back and forth between your old and new RUSLE2 databases.

STEP G. TRANSFERRING FILES FROM YOUR OLD DATABASE – OPTIONAL

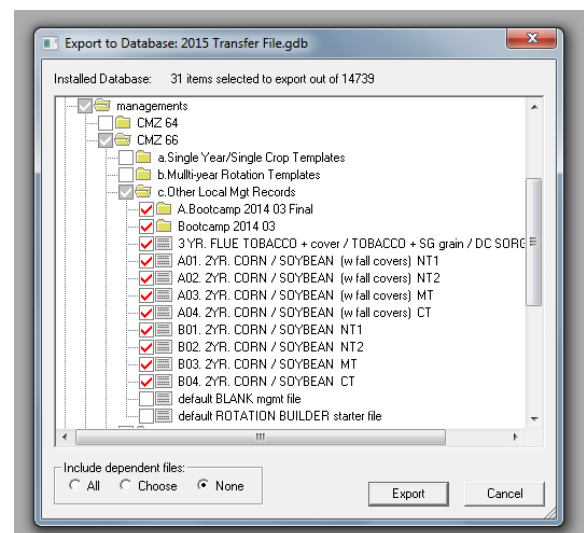
Do this only if you save a copy of your old RUSLE2 database in Steps A.2. & 3. above!

1. To transfer selected contents of your old database into your new database.

It is important to understand your old and new databases do not contain the same soils data. The main reason you are using the new database is so that you can access updated soils. Your old calculations will probably not link up properly with the new soils files.

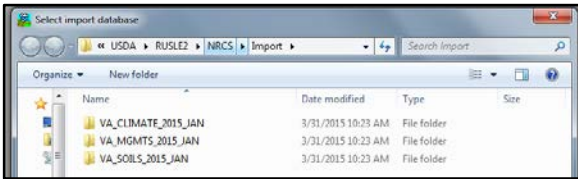
2. Exporting old work from your old database.

- a. Start RUSLE2 and select your old database.
- b. Think about the files you wish to transfer. The main files you should consider are customized “Other Local Mgmt Records”. Don’t forget to look in “c.” subfolders for all CMZs in which you’ve been working. I discourage you from transferring your saved calculations (more on that below). Remember, all of your old files (including plans and other calculations) will be archived in the old database, not discarded. So if you really need to get back to them in the future, you will be able to do so.
- c. From the “Database” menu, select “Export with templates, access...”
- d. When “Begin Export” window appears, put a check in the box for “Database records,” then hit “Next”.
- e. In the next window, type in the name “2015 Transfer File”, then hit “Next”.
- f. Then hit “Finish” (although you are not really finished).
- g. In the next window, carefully select files that you want to transfer by putting a red check in the associated boxes. See screenshot below. I strongly recommend that you only select management files from the “c. Other Local Mgmt Records” folder(s). **DO NOT** select management files starting with the word “default”, regardless of their location. Although I discourage it, you can also select calculations (plans, worksheets, or profiles). Just remember that calculation files will likely have broken links. Broken links can be repaired, just be aware that you will need to do that before you can use those old calculation files in your new database. **NO MATTER WHAT, do not select any files to transfer other than “Other Local Mgmt Records” and/or plans, worksheets, or profiles.** When you have selected all files to be transferred, be sure to choose option “None” under “Include dependent files” in the bottom left-hand corner (see screenshot to right).
- h. Hit “OK” if a warning dialog box comes up.
- i. You have now created a RUSLE2 file that contains the items you wish to transfer into your new database. You will use that file in a later step.

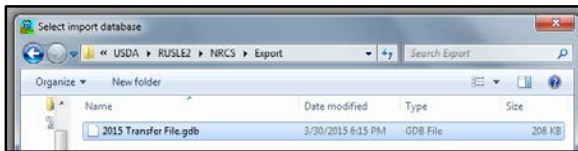


3. Importing old data into your new database.

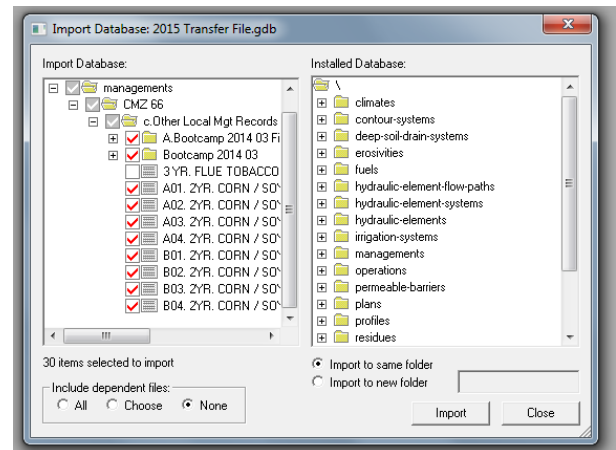
- a. You will now transfer (or “import”) into your new moses database the contents of the “2015 Transfer File” that you created above.
- b. Make sure you are reading your new database – this is crucial!
- c. From the “Database” menu, select “Import RUSLE2 Database...”
- d. When the “Select Import Database” window appears, you will be in the following default location: C:\ProgramData\USDA\RUSLE2\NRCS\Import (see screenshot below).



- e. You want to navigate to the following location to select your database to import: C:\ProgramData\USDA\RUSLE2\NRCS\Export. This folder is where you will find the “2015 Transfer File” that you created in Step 2 (see screenshot below).



- f. Select the “2015 Transfer File” as the file to import into your new shared moses database. After the next window appears, use the left-hand box to select exactly which items you want to transfer. Put a red check in the little boxes adjacent to each item you want to transfer. This is basically a “second chance” to check that you did Step 2 properly and to screen out any unwanted items before you import them. **NO MATTER WHAT, do not select any items to transfer other than customized “Other Local Mgmt Records” and/or plans, worksheets, or profiles.** When you have selected all items to be transferred, make sure you choose option “None” under “Include dependent files” in the bottom left-hand corner (see screenshot the right).



- g. Hit “OK” if a warning dialog box comes up about unresolved links. Various other warnings may come up. Read each box carefully and respond as needed. When in doubt, contact Chris Lawrence.
- h. You have now transferred key items from your old 2012 NRCS Field Office shared moses database into your new 2015 NRCS Field Office shared moses database. Explore your new 2015 database to make sure the transferred items are where you would expect them to be.