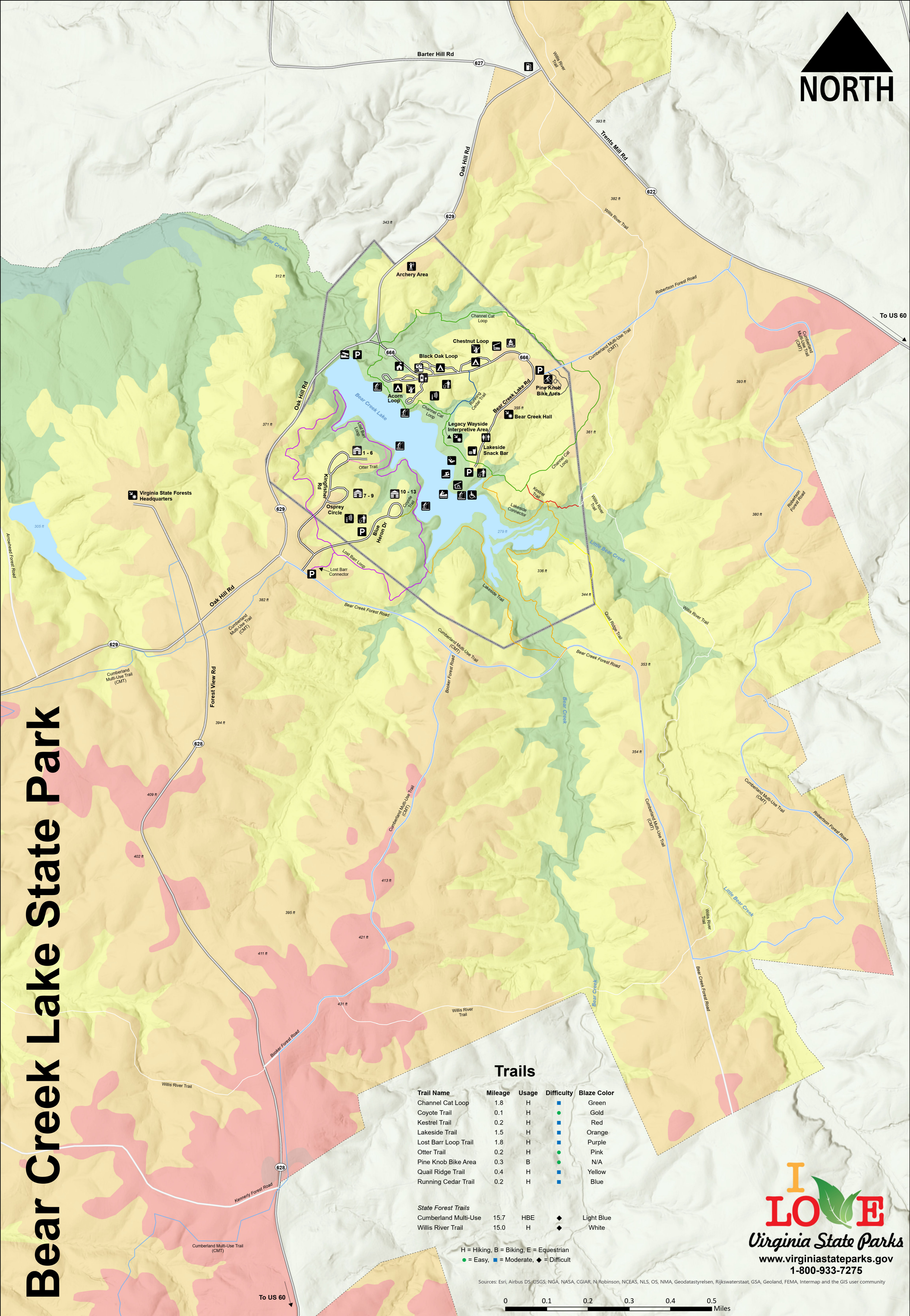




# Bear Creek Lake State Park

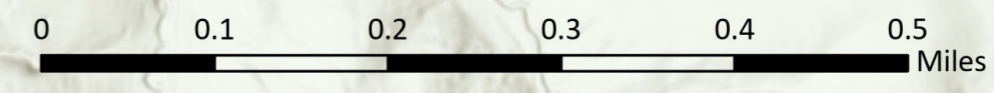


### Trails

Trail Name	Mileage	Usage	Difficulty	Blaze Color
Channel Cat Loop	1.8	H	■	Green
Coyote Trail	0.1	H	■	Gold
Kestrel Trail	0.2	H	■	Red
Lakeside Trail	1.5	H	■	Orange
Lost Barr Loop Trail	1.8	H	■	Purple
Otter Trail	0.2	H	■	Pink
Pine Knob Bike Area	0.3	B	■	N/A
Quail Ridge Trail	0.4	H	■	Yellow
Running Cedar Trail	0.2	H	■	Blue
<b>State Forest Trails</b>				
Cumberland Multi-Use	15.7	HBE	◆	Light Blue
Willis River Trail	15.0	H	◆	White

H = Hiking, B = Biking, E = Equestrian  
 ● = Easy, ■ = Moderate, ◆ = Difficult

Sources: Esri, Airbus DS, USGS, NGA, NASA, CGIAR, N Robinson, NCEAS, NLS, OS, NMA, Geodatastyrelsen, Rijkswaterstaat, GSA, Geoland, FEMA, Intermap and the GIS user community



### Legend

	Accessible		Group Campground		Showers / Bathhouse		200 - 250 ft above sea level
	Archery Area		Lakeside Snack Bar		Swimming Area		250 - 300 ft above sea level
	Boat Ramp		Office		Trash / Recycling		300 - 350 ft above sea level
	Boat Rental		Parking		WIFI		350 - 400 ft above sea level
	Bunk House		Picnic Shelter		Main Roads		400 - 450 ft above sea level
	Cabin Area		Pine Knob Bike Area		Park Roads		450 - 500 ft above sea level
	Campground		Playground		State Forest Roads		World Hillshade
	Contact Station		Point of Interest		Streams		
	Fishing Platform		Restrooms		Bear Creek Lake State Park Boundary		
	Gas Station		Sanitary Disposal Station		Cumberland State Forest Boundary		