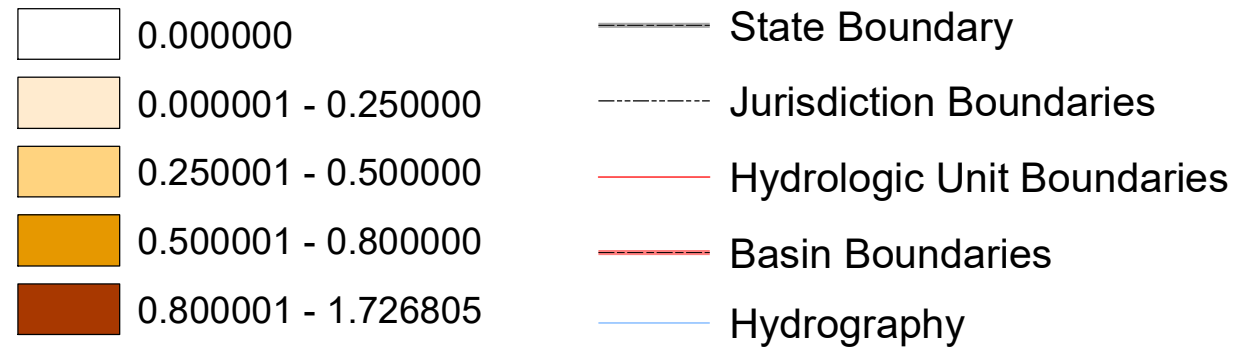


Virginia's 2022 Nonpoint Source Assessment Animal Distributions

Total Animal Unit (AU) Concentrations

Total AUs* Per Acre Per Hydrologic Unit



Hydrologic Unit Data

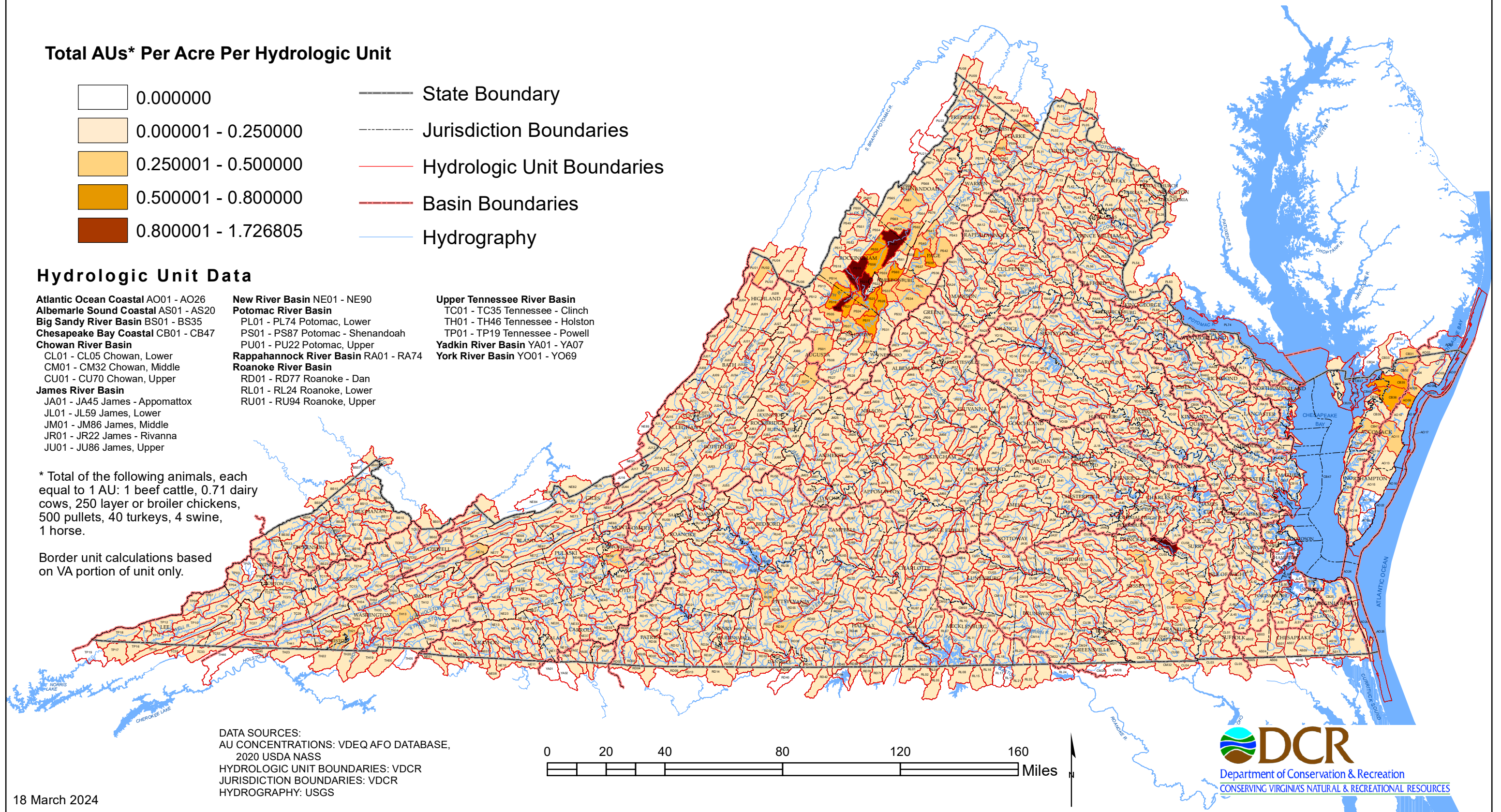
Atlantic Ocean Coastal AO01 - AO26
Albemarle Sound Coastal AS01 - AS20
Big Sandy River Basin BS01 - BS35
Chesapeake Bay Coastal CB01 - CB47
Chowan River Basin
 CL01 - CL05 Chowan, Lower
 CM01 - CM32 Chowan, Middle
 CU01 - CU70 Chowan, Upper
James River Basin
 JA01 - JA45 James - Appomattox
 JL01 - JL59 James, Lower
 JM01 - JM86 James, Middle
 JR01 - JR22 James - Rivanna
 JU01 - JU86 James, Upper

New River Basin NE01 - NE90
Potomac River Basin
 PL01 - PL74 Potomac, Lower
 PS01 - PS87 Potomac - Shenandoah
 PU01 - PU22 Potomac, Upper
Rappahannock River Basin RA01 - RA74
Roanoke River Basin
 RD01 - RD77 Roanoke - Dan
 RL01 - RL24 Roanoke, Lower
 RU01 - RU94 Roanoke, Upper

Upper Tennessee River Basin
 TC01 - TC35 Tennessee - Clinch
 TH01 - TH46 Tennessee - Holston
 TP01 - TP19 Tennessee - Powell
Yadkin River Basin YA01 - YA07
York River Basin YO01 - YO69

* Total of the following animals, each equal to 1 AU: 1 beef cattle, 0.71 dairy cows, 250 layer or broiler chickens, 500 pullets, 40 turkeys, 4 swine, 1 horse.

Border unit calculations based on VA portion of unit only.



DATA SOURCES:
 AU CONCENTRATIONS: VDEQ AFO DATABASE,
 2020 USDA NASS
 HYDROLOGIC UNIT BOUNDARIES: VDCR
 JURISDICTION BOUNDARIES: VDCR
 HYDROGRAPHY: USGS

