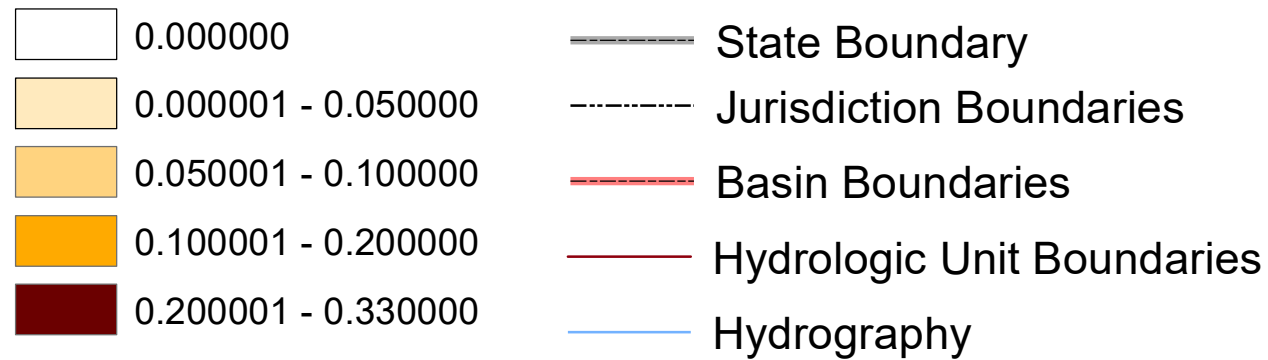


# Virginia's 2022 Nonpoint Source Assessment Animal Distributions

## Dairy Cow Concentrations

### Dairy Cows\* Per Acre Per Hydrologic Unit

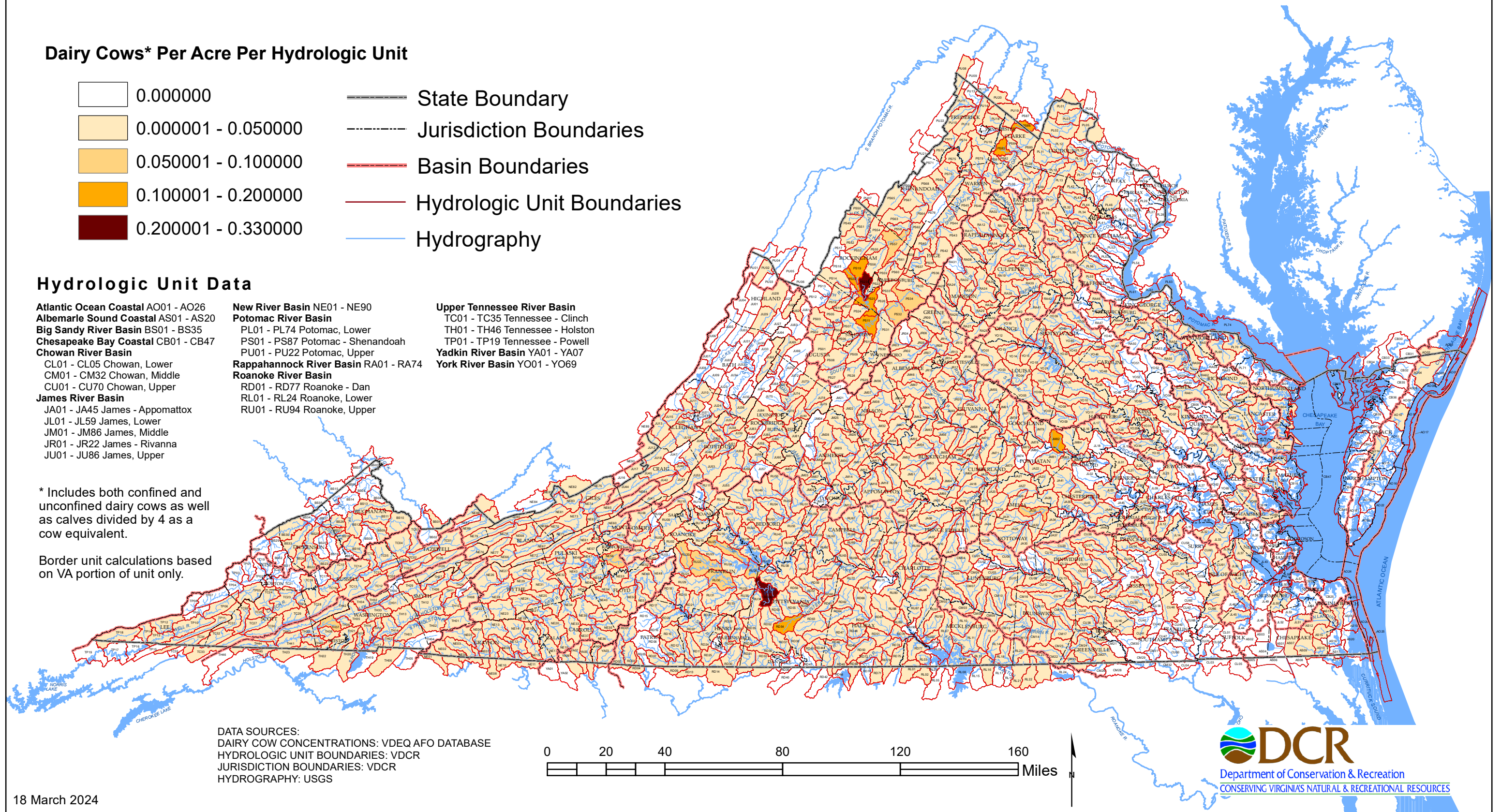


### Hydrologic Unit Data

- |  |   |                                       |
|--|---|---------------------------------------|
| <b>Atlantic Ocean Coastal</b> AO01 - AO26  | <b>New River Basin</b> NE01 - NE90          | <b>Upper Tennessee River Basin</b>    |
| <b>Albemarle Sound Coastal</b> AS01 - AS20 | <b>Potomac River Basin</b>                  | TC01 - TC35 Tennessee - Clinch        |
| <b>Big Sandy River Basin</b> BS01 - BS35   | PL01 - PL74 Potomac, Lower                  | TH01 - TH46 Tennessee - Holston       |
| <b>Chesapeake Bay Coastal</b> CB01 - CB47  | PS01 - PS87 Potomac - Shenandoah            | TP01 - TP19 Tennessee - Powell        |
| <b>Chowan River Basin</b>                  | PU01 - PU22 Potomac, Upper                  | <b>Yadkin River Basin</b> YA01 - YA07 |
| CL01 - CL05 Chowan, Lower                  | <b>Rappahannock River Basin</b> RA01 - RA74 | <b>York River Basin</b> YO01 - YO69   |
| CM01 - CM32 Chowan, Middle                 | <b>Roanoke River Basin</b>                  |                                       |
| CU01 - CU70 Chowan, Upper                  | RD01 - RD77 Roanoke - Dan                   |                                       |
| <b>James River Basin</b>                   | RL01 - RL24 Roanoke, Lower                  |                                       |
| JA01 - JA45 James - Appomattox             | RU01 - RU94 Roanoke, Upper                  |                                       |
| JL01 - JL59 James, Lower                   |   |                                       |
| JM01 - JM86 James, Middle                  |   |                                       |
| JR01 - JR22 James - Rivanna                |   |                                       |
| JU01 - JU86 James, Upper                   |   |                                       |

\* Includes both confined and unconfined dairy cows as well as calves divided by 4 as a cow equivalent.

Border unit calculations based on VA portion of unit only.



DATA SOURCES:  
 DAIRY COW CONCENTRATIONS: VDEQ AFO DATABASE  
 HYDROLOGIC UNIT BOUNDARIES: VDCR  
 JURISDICTION BOUNDARIES: VDCR  
 HYDROGRAPHY: USGS

