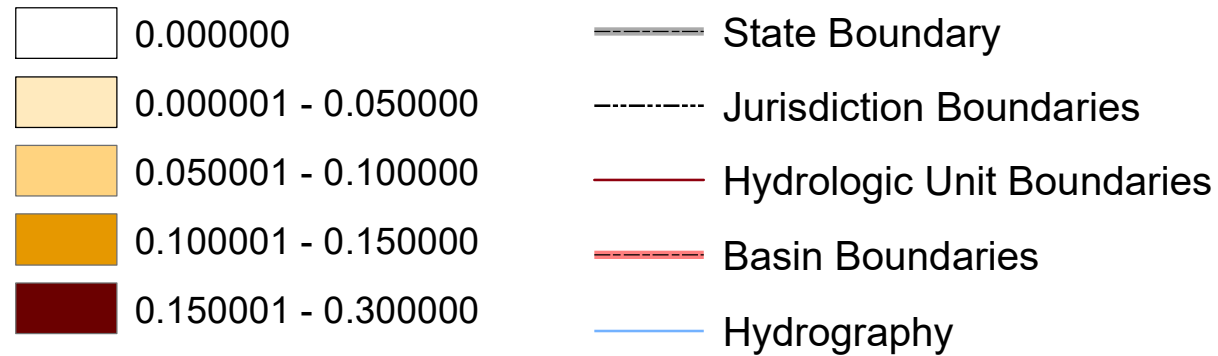


Virginia's 2022 Nonpoint Source Assessment Animal Distributions

Beef Cattle Concentrations

Beef Cattle* Per Acre Per Hydrologic Unit

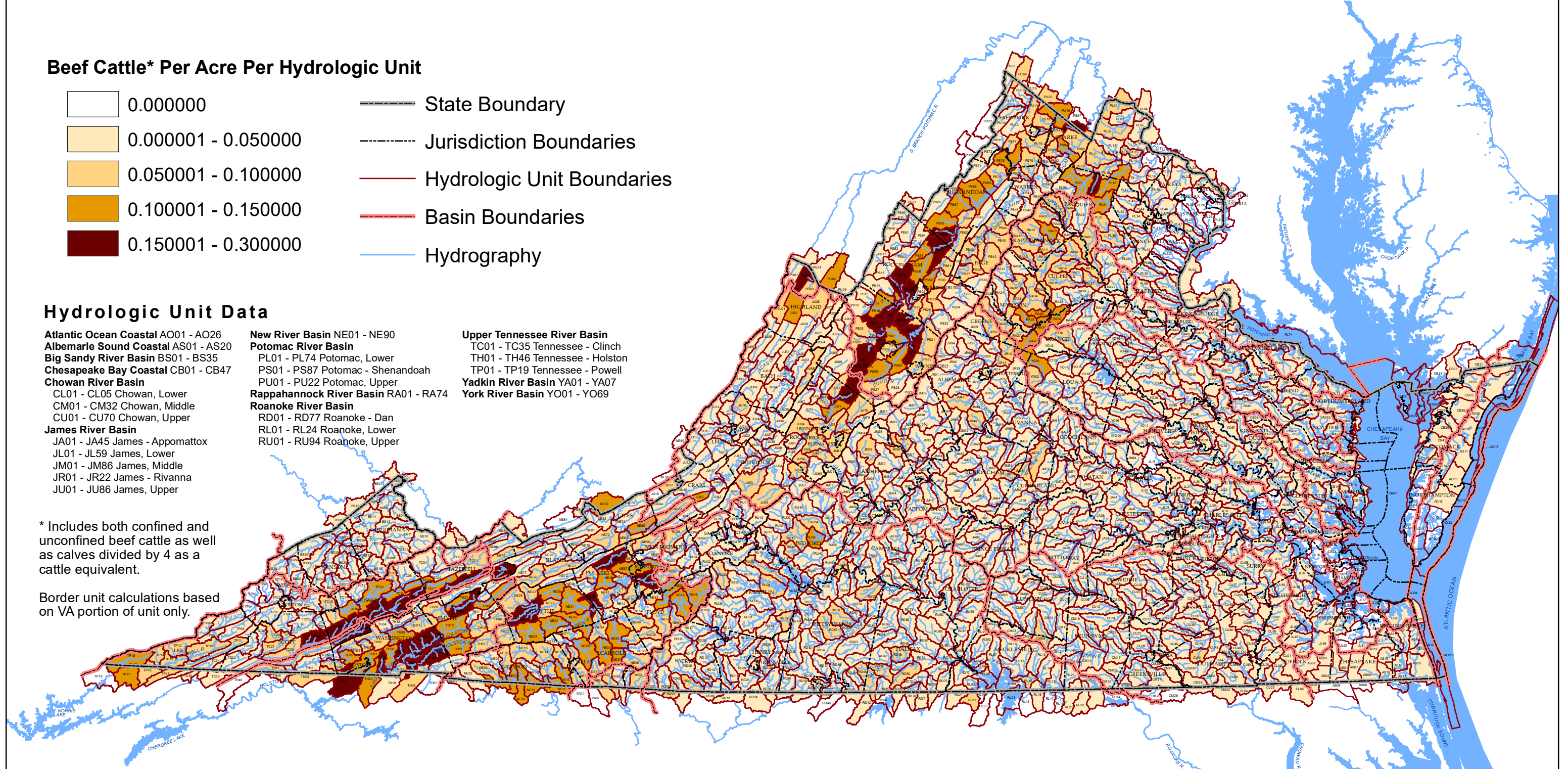


Hydrologic Unit Data

- | | | |
|--|---|---------------------------------------|
| Atlantic Ocean Coastal AO01 - AO26 | New River Basin NE01 - NE90 | Upper Tennessee River Basin |
| Albemarle Sound Coastal AS01 - AS20 | Potomac River Basin | TC01 - TC35 Tennessee - Clinch |
| Big Sandy River Basin BS01 - BS35 | PL01 - PL74 Potomac, Lower | TH01 - TH46 Tennessee - Holston |
| Chesapeake Bay Coastal CB01 - CB47 | PS01 - PS87 Potomac - Shenandoah | TP01 - TP19 Tennessee - Powell |
| Chowan River Basin | PU01 - PU22 Potomac, Upper | Yadkin River Basin YA01 - YA07 |
| CL01 - CL05 Chowan, Lower | Rappahannock River Basin RA01 - RA74 | York River Basin YO01 - YO69 |
| CM01 - CM32 Chowan, Middle | Roanoke River Basin | |
| CU01 - CU70 Chowan, Upper | RD01 - RD77 Roanoke - Dan | |
| James River Basin | RL01 - RL24 Roanoke, Lower | |
| JA01 - JA45 James - Appomattox | RU01 - RU94 Roanoke, Upper | |
| JL01 - JL59 James, Lower | | |
| JM01 - JM86 James, Middle | | |
| JR01 - JR22 James - Rivanna | | |
| JU01 - JU86 James, Upper | | |

* Includes both confined and unconfined beef cattle as well as calves divided by 4 as a cattle equivalent.

Border unit calculations based on VA portion of unit only.



DATA SOURCES:
 CATTLE CONCENTRATIONS: VDEQ AFO DATABASE & 2022 USDA NASS DATA
 HYDROLOGIC UNIT BOUNDARIES: VDCR
 JURISDICTION BOUNDARIES: VDCR
 HYDROGRAPHY: USGS

