



## DESIGN PROGRESS

# SETTLEMENT PATTERNS AND AGRICULTURE

Placemaking in Tsenacomahoc is based on the relational orientation of land and water, as seen from the vantage point of a canoe. This was embedded in the language and naming before the rise of agriculture among the Virginia Algonquians. For example,

- Attamuspinck - Atamasco-lily swamp
- Pamunky - Sloping hill
- Winsack - Pleasant place at river mouth
- Namoraughquend - Fishing place

A few notable exceptions to naming convention include Chickahominy (Course Ground Corn People) and Werowocomoco (Place of the Antler Wearers).

Many of the settlements of Tsenacomahoc were located on the inner coastal plain, which had the best combination of good fishing, level riverfront soils, freshwater marshes, and mixed deciduous forests.

There was a cultural move from a forager-fisher lifestyle to town-based horticulture. Some towns were made up of 30-40 houses, with houses and residential spaces in the center and scattered along elevated terraces by the river. Below these terraces, garden plots were located long the flood plain. They were typically 100-200 sf in size.

The Algonquian integrated domestic plants into their yearly subsistence cycles. The diet of Tsenacomahoc was diverse enough to insulate people from catastrophic consequences of failure of any one food source.



Mixed deciduous forests provided nuts for foraging and opportunities for hunting



Common rush (*Juncus effusus*) was woven into mats



Arrow arum (*Peltandra virginica*) tubers were foraged and pulverized to make flour for bread.



Oysters were collected at procurement camps

## HALF OF A STREAM VALLEY

### UPLANDS WITH DECIDUOUS FOREST

(FORAGING)



- ALL YEAR:**  
 Firewood  
 Cedar bark for fabric  
 Deer  
 Bear  
 Wild turkeys  
 Raccoons  
 Opossums  
 Box turtles  
 Passenger pigeons
- FALL:**  
 Acorns  
 Walnuts  
 Hickory nuts  
 Beech nuts  
 Chestnuts  
 Chinquapins
- SEASONAL:**  
 Medicinal herbs  
 Bloodroot  
 Oak/Elm bark for shingles  
 Saplings for structures

### LOWER TERRACE: HOUSES & FIELDS

(LIVING, FARMING, FORAGING)

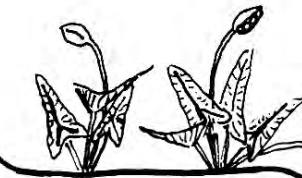
- Yr. 1:** girdle trees  
**Yr. 2:** clear, cultivate (very good yield)  
**Yr. 3:** cultivate (good yield)  
**Yr. 4:** cultivate (fair yield)



- Yrs. 1-2 fallow:**  
 Little barley  
 Maypops  
 Cordage plants  
 Blackberries  
 Raspberries
- Yrs. 3-7 fallow:**  
 Cordage plants  
 Blackberries  
 Raspberries  
 Black cherry  
 Wild grapes  
 Groundnut  
 Hog peanut  
 Wild potato vine  
 Cleavers  
 Wild rose  
 Var. briars  
 Persimmon  
 Sassafras  
 Chinquapin  
 Small pines  
 Small oaks
- Yr. 7+ fallow:**  
 Last 7 items, in the form of saplings squeezing out briars and roses

### MARSH (SALT OR FRESH)

(FORAGING)



- Reeds for mats  
 Arrow arum tubers (Tuckahoe)  
 Wild rice  
 Muskrats  
 Raccoons  
 Snapping turtles  
 Sora rail birds

### WATERWAY (SALT OR FRESH)

(TRANSPORT, FORAGING)

- Fish  
 Crabs  
 Crayfish  
 Mussels  
 Oysters  
 Clams  
 Arrow arum berries (cuttanemons; floating in fall)  
 Migratory ducks  
 Migratory geese  
 Beavers  
 Otters

(Mirror Image)

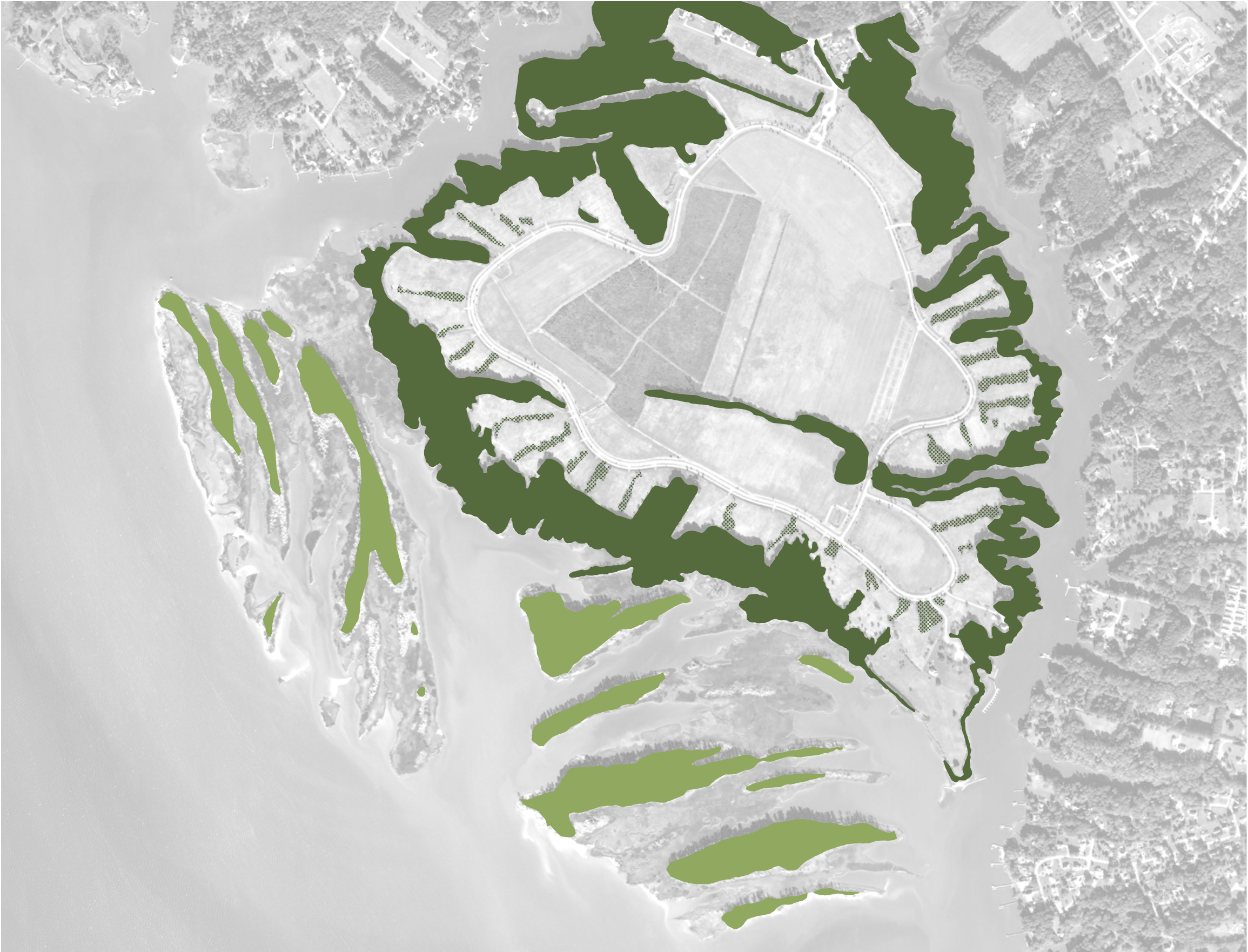
Section of Typical Virginia Algonquian Subsistence Landscape



Credit: Helen C. Rountree, Before and After Jamestown: Virginia's Powhatans and Their Predecessors

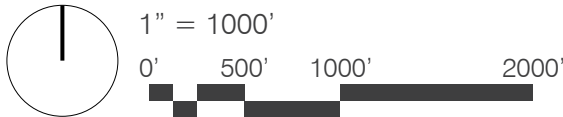




**FORESTED AREAS**

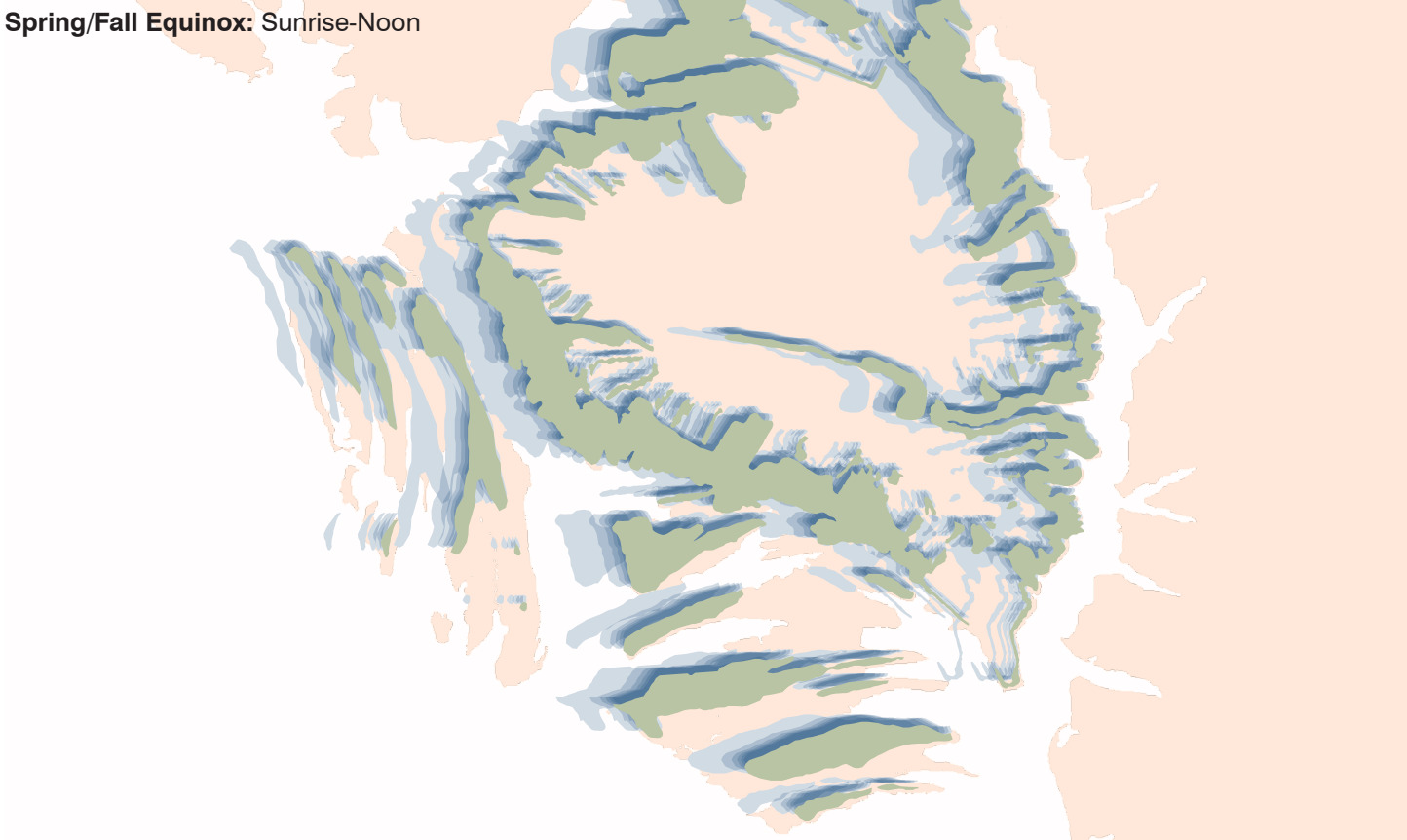


 Maritime Upland Forest  
 Riparian Forest

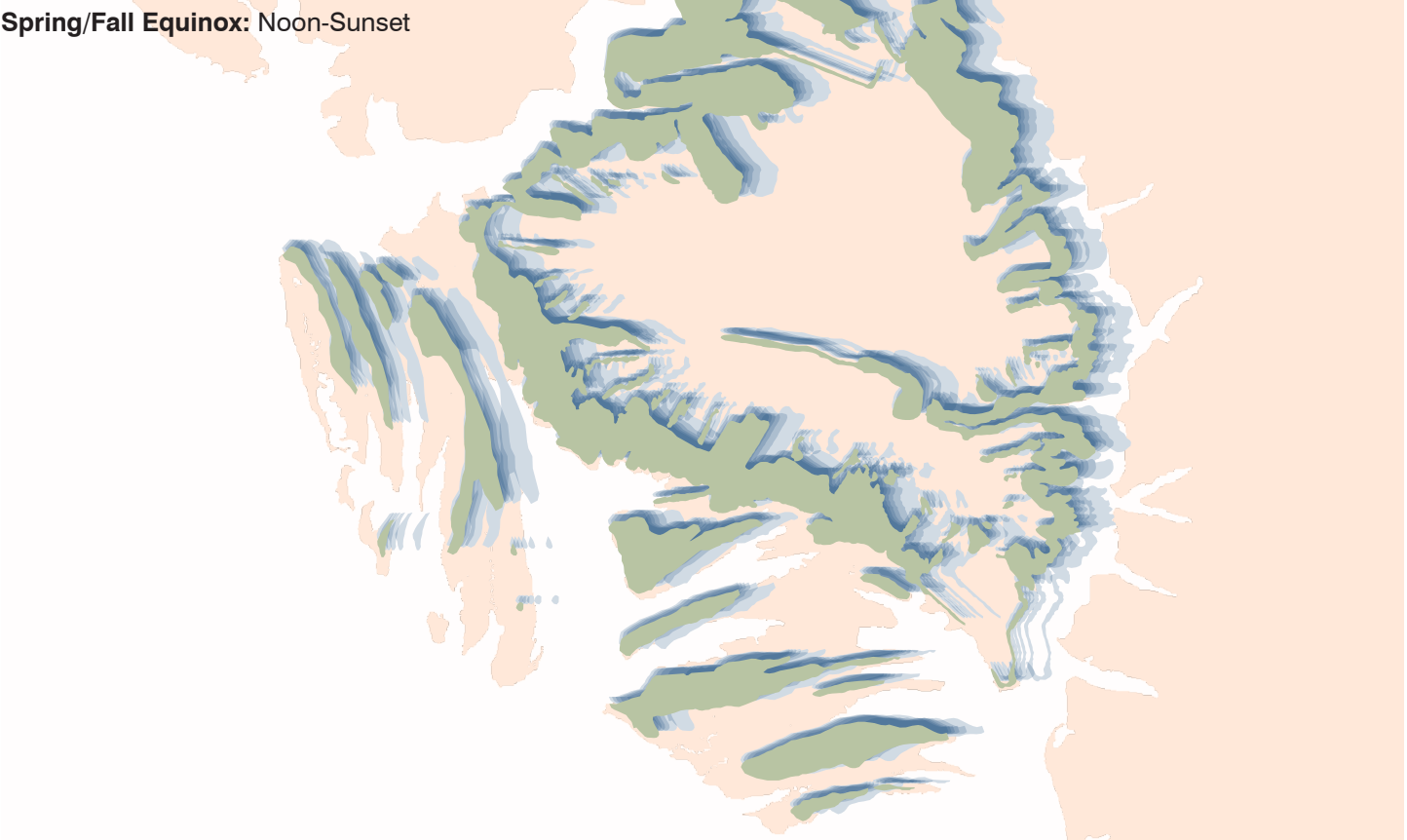


# SHADOW STUDY

Spring/Fall Equinox: Sunrise-Noon



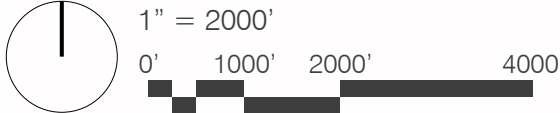
Spring/Fall Equinox: Noon-Sunset



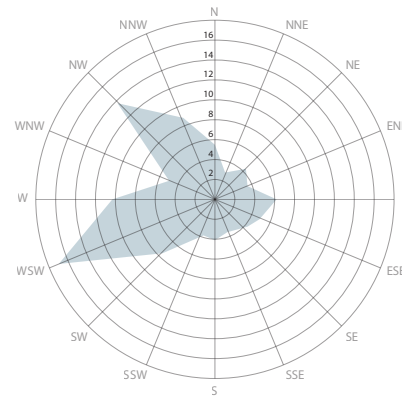
Summer Solstice: Sunrise-Noon



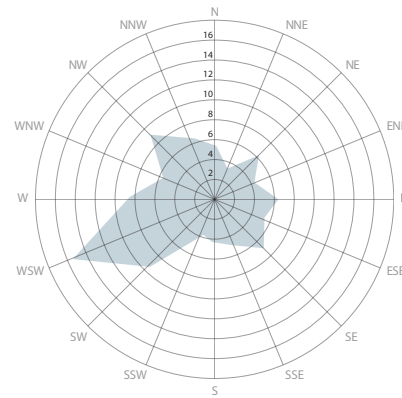
Summer Solstice: Noon-Sunset



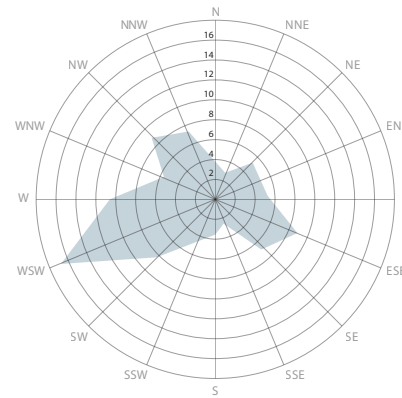
# PREVAILING WIND DIRECTION



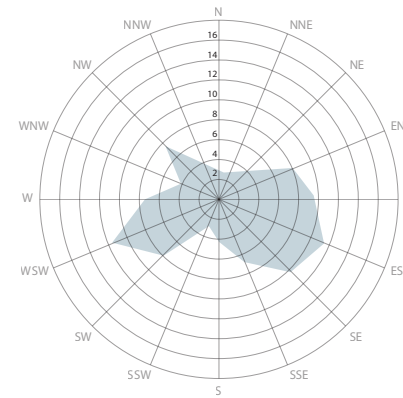
Jan



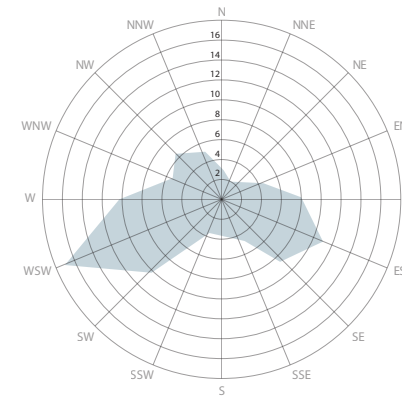
Feb



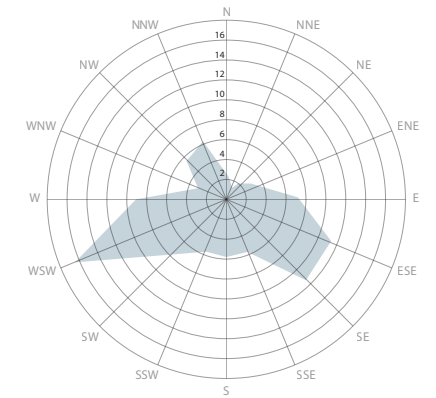
Mar



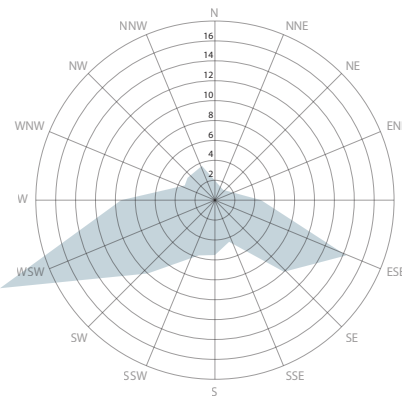
Apr



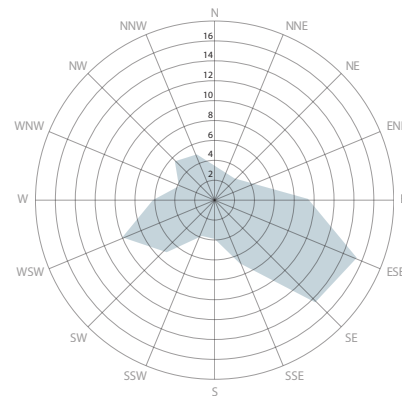
May



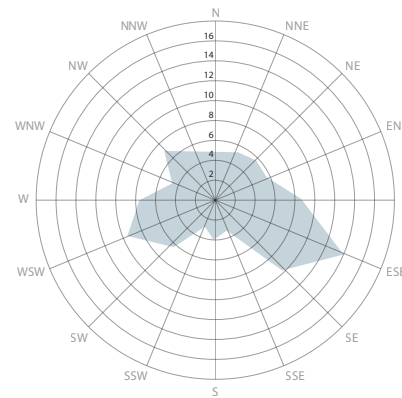
June



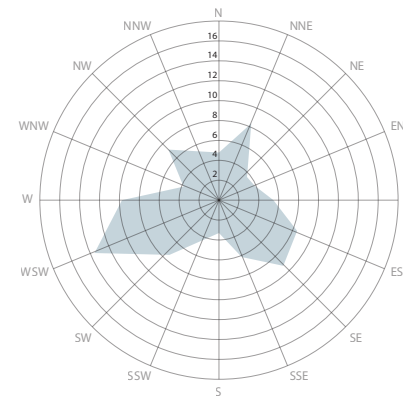
July



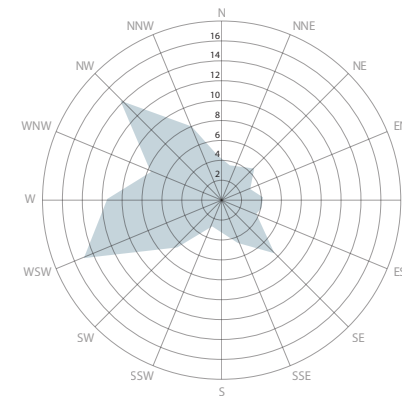
Aug



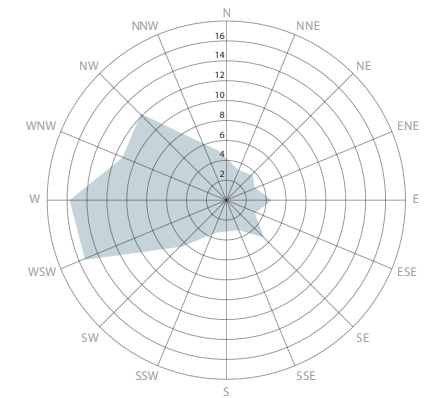
Sep



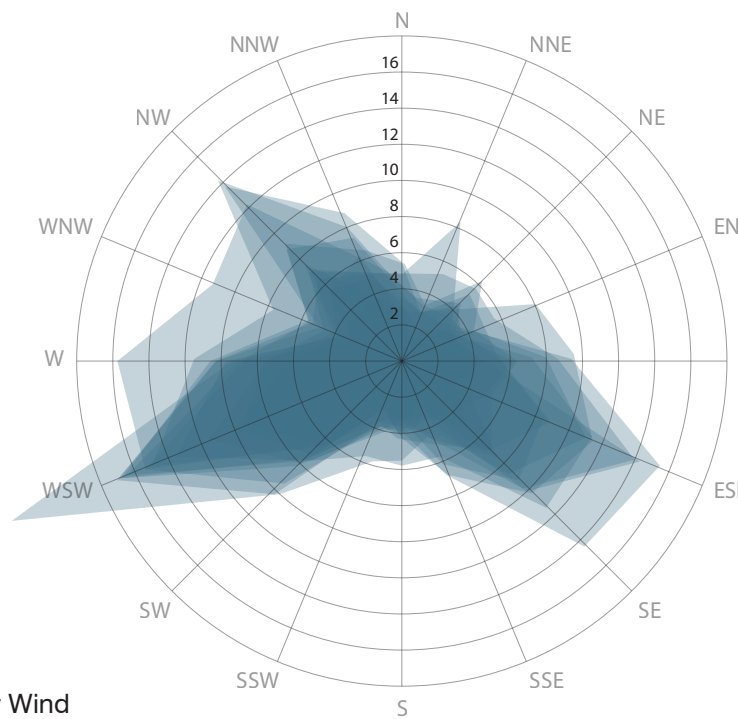
Oct



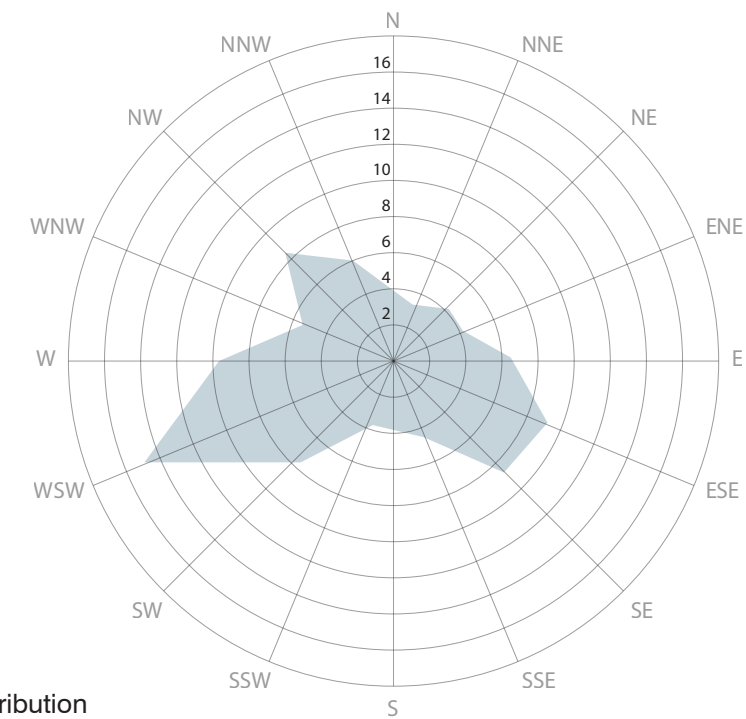
Nov



Dec



Overlay of Monthly Wind



Yearly Average Distribution

CAMPGROUND AREA | Plan



- LEGEND**
- 1. Walk-In Campsite
  - 2. Walk-In Campsite Parking
  - 3. Back-In RV Site
  - 4. Pull Through RV Site
  - 5. Bathhouse
  - 6. Host Site w/ Drainfield Connection
  - 7. 100' x 200' Drainfield
  - 8. RV Dump Station



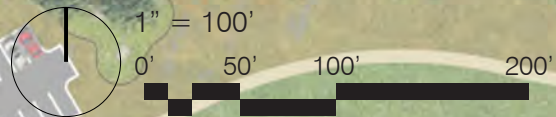




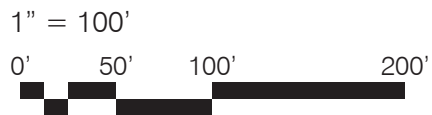
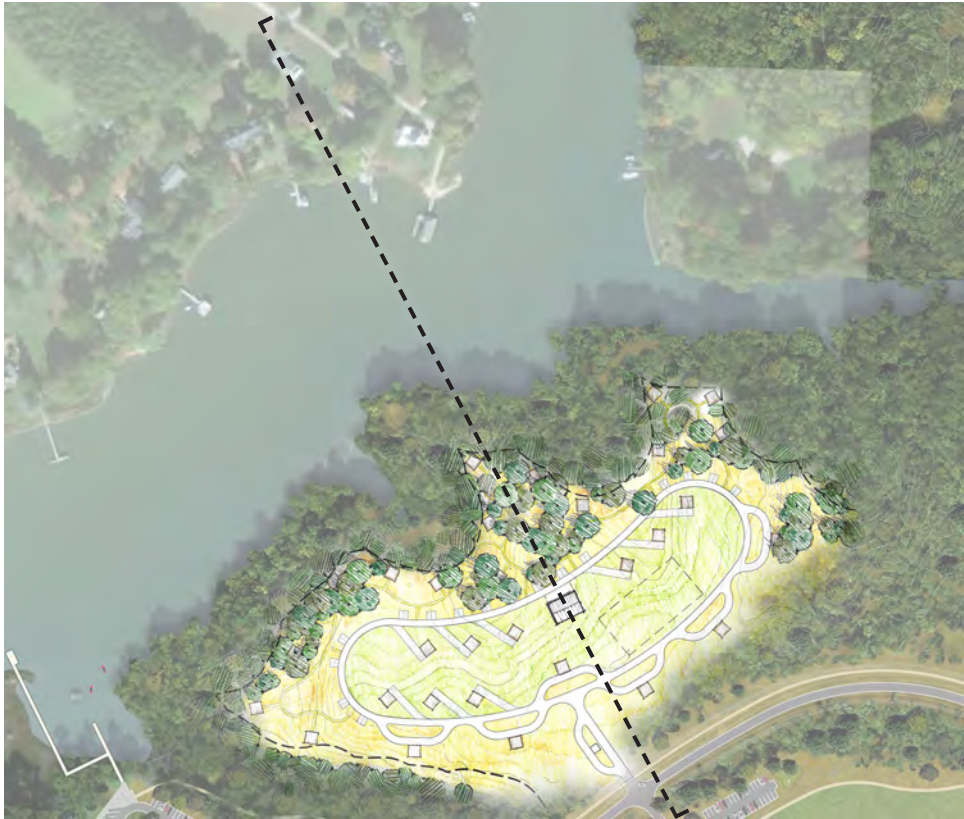
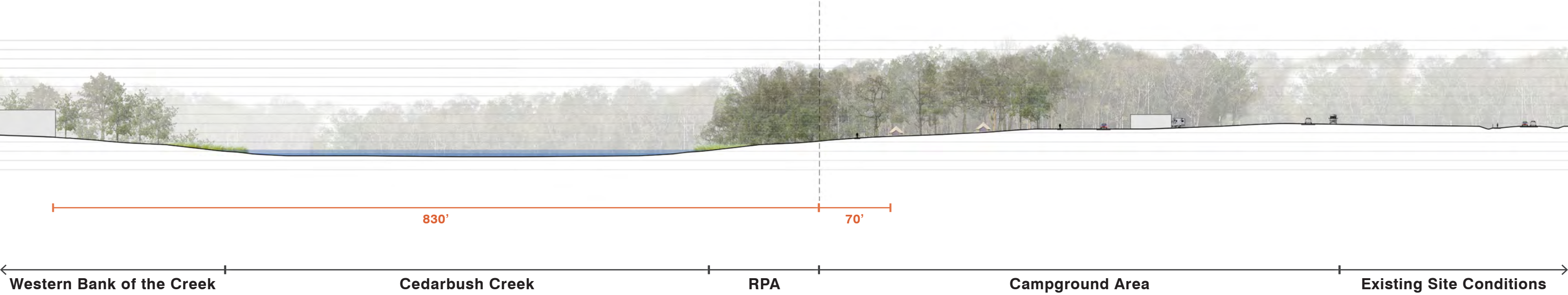
16 Primitive Walk-in Tent Sites Under Existing Mature Hardwoods

100' RPA Buffer

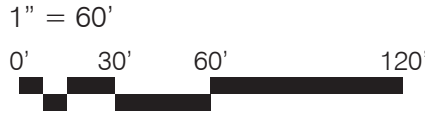
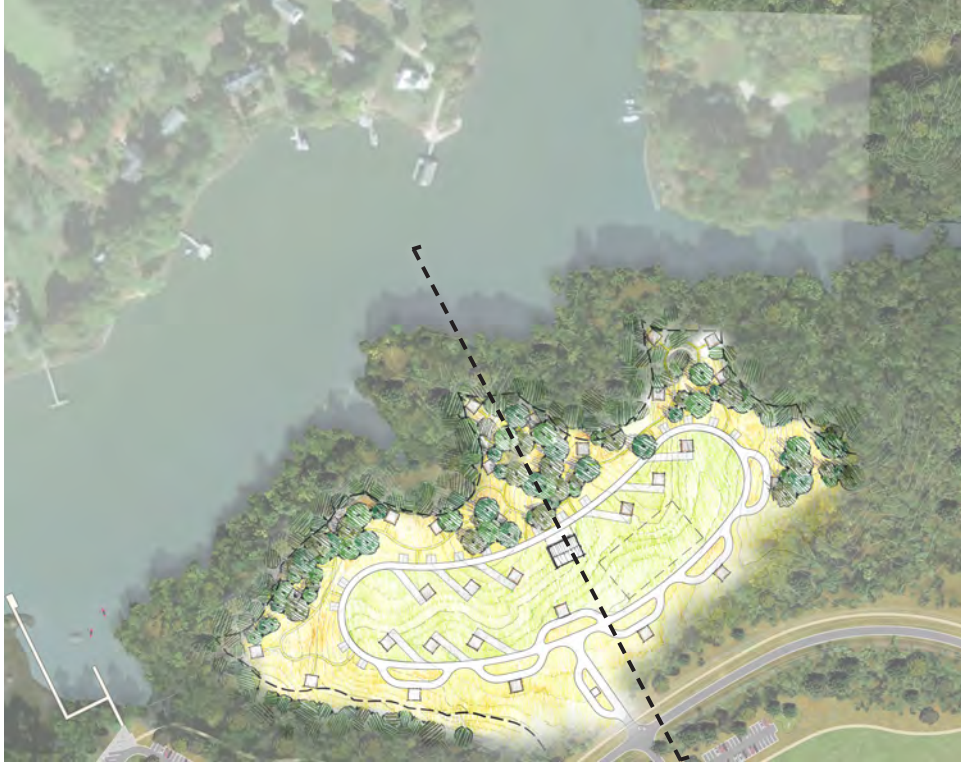
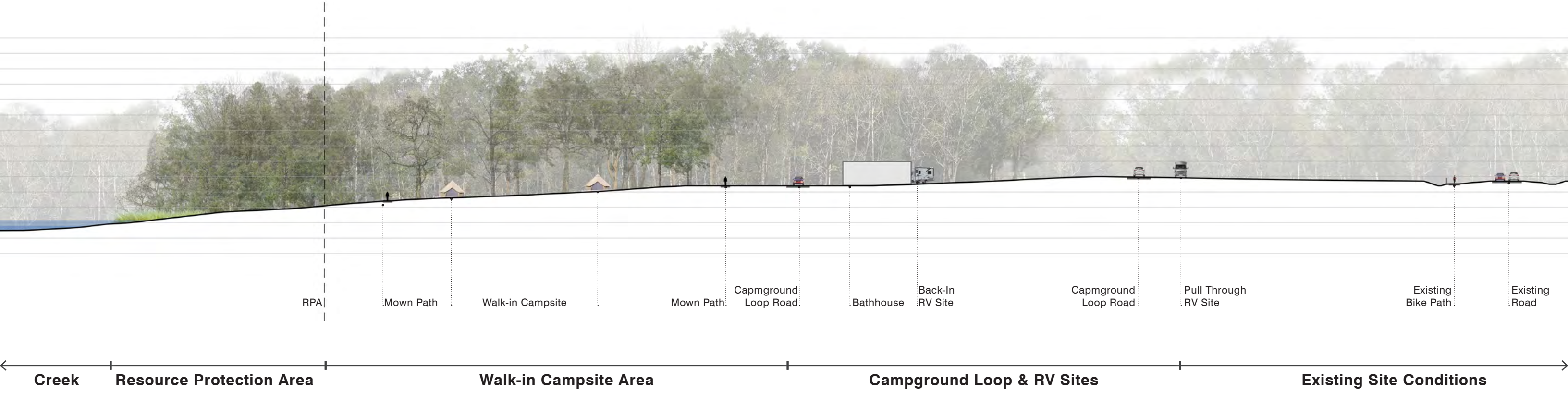
14 Vehicular/RV Sites in Existing Field



CAMPGROUND AREA | Section



CAMPGROUND AREA | Section

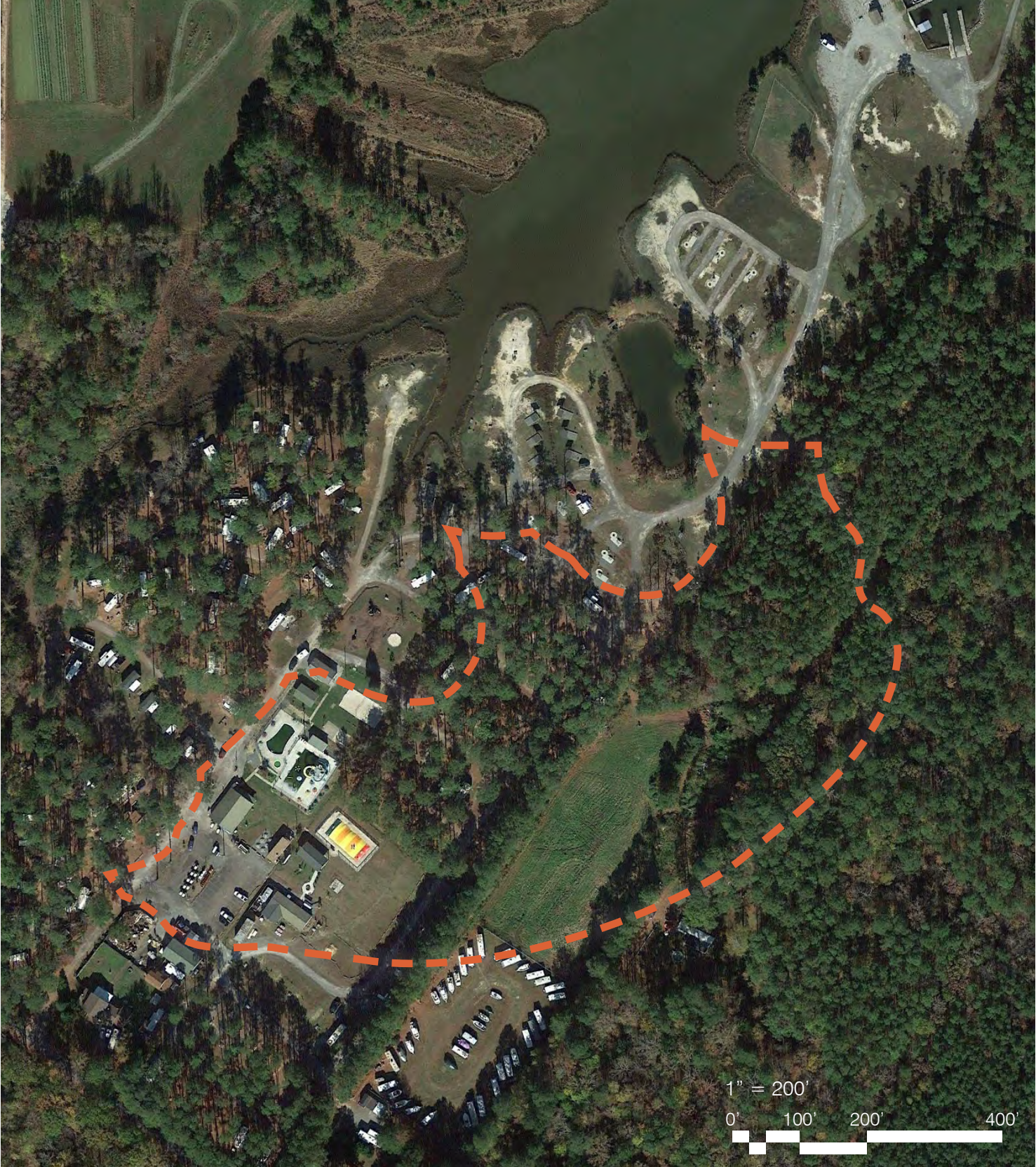


CAMPGROUND AREA | Local Precedents Comparison

Gateway to Werowocomoco Proposed Campground (30 Sites)



Yogi Bear's Jellystone Park Camp-Resort at Gloucester Point (200 Sites)



CAMPGROUND AREA | Local Precedents Comparison

Chesapeake Bay RV Resort (365 Sites)



CAMPGROUND AREA | Local Precedents Comparison

Grey's Point Camp (Over 400 Sites)



# CAMPGROUND AREA | Local Precedents Comparison

Bethpage Camp Resort (Over 400 Sites)





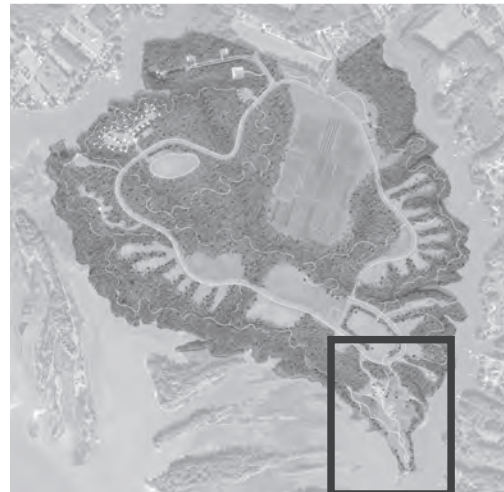
- LEGEND**
- 1. Accessible Boat Launch
  - 2. Boat Launch Ramp/Shoreline
  - 3. Staging Plaza & Resting Place
  - 4. Future Interpretive Boardwalk and Overlook
  - 5. Vault Restroom
  - 6. Boat Drop Off
  - 7. Kayak Storage Structure
  - 8. Recreational Lawn
  - 9. Gravel Boat Trailer Parking
  - 10. Turn Around
  - 11. Car Access Road
  - 12. Gravel Parking Lot
  - 13. Bike Access Path
  - 14. Bike Rack
  - 15. Future Hiking Path



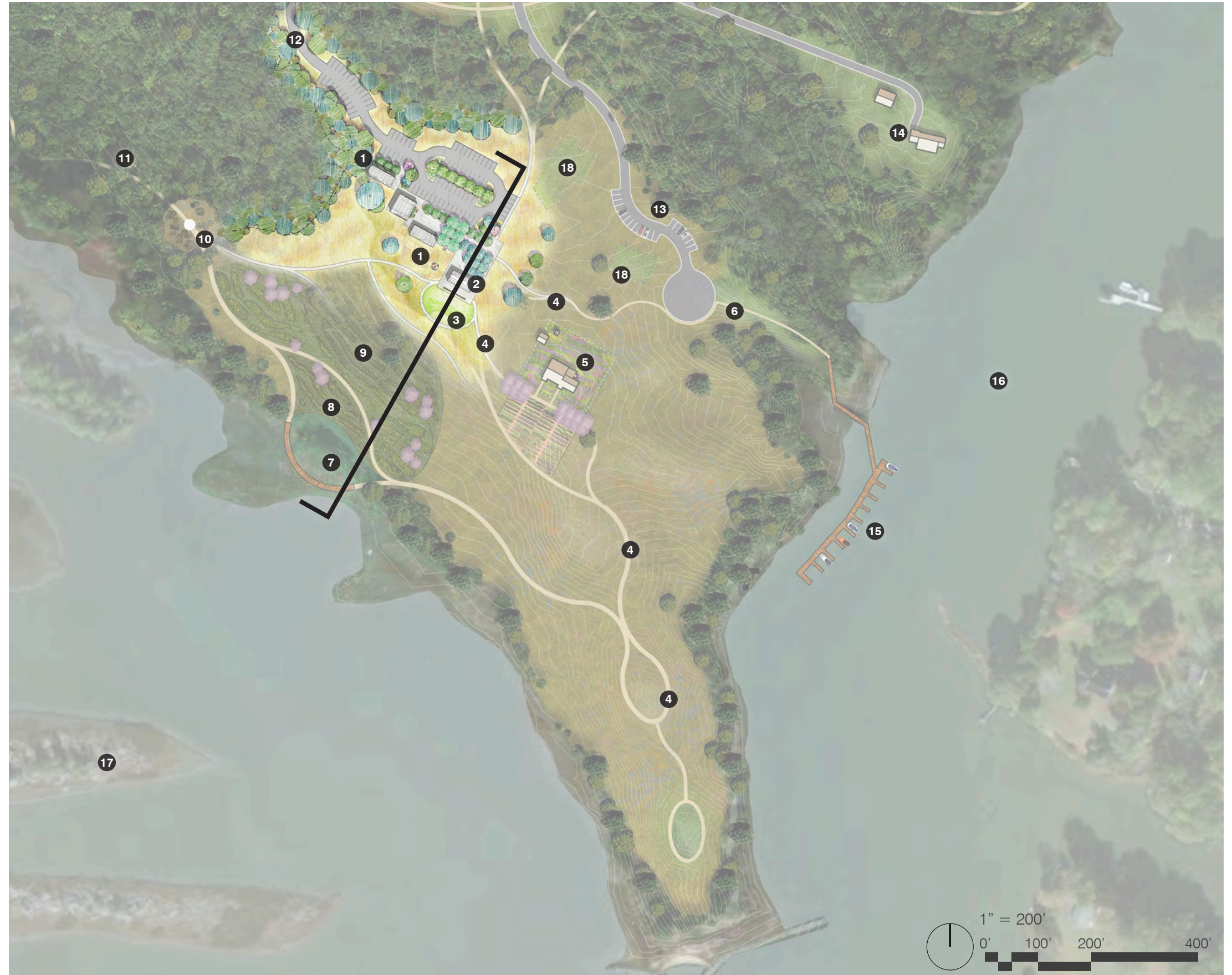


# INTERPRETIVE PENINSULA | Master Plan Scheme

1. Picnic shelters (2) with shared restroom
2. Multi-purpose Open-Air Education Pavilion
3. Accessible Outdoor Classroom
4. Crushed oyster shell path
5. Existing Farmhouse: Colonial Period Agriculture
6. Boat Slip Entrance Path
7. Water's Edge and Marsh Terrace Algonquian Subsistence: Foraging and Cultivation
8. Lower Terrace Algonquian Subsistence Plot Rotation
9. Lower Terrace Algonquian Subsistence Plot Rotation
10. Upland Deciduous Forest: Algonquian Burned Forest Garden
11. Upland Deciduous Forest: Algonquian Guided Foraging
12. Visitor Access Road
13. Overflow or Staff Parking
14. Future Phase Staff House
15. Existing Boat Slips
16. Timberneck Creek
17. Catlett Islands
18. Existing Cemetery



Key Plan



# INTERPRETIVE AREA | Plan

- 1. Picnic shelters (2) with shared restroom
- 2. Multi-purpose Open-Air Education Pavilion
- 3. Outdoor Classroom (Grass Slope)
- 4. Restroom
- 5. Accessible Entry Plaza: pervious concrete pavers
- 6. Crushed oyster shell path
- 7. Asphalt Parking Lot
- 8. Lower Terrace Algonquian Subsistence Plot Rotation
- 9. Upland Deciduous Forest
- 10. Visitor Access Road
- 11. Existing Cemetery
- 12. ADA path surrounding outdoor classroom
- 13. Plaza benches

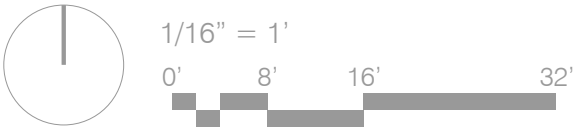


Key Plan

INTERPRETIVE AREA | Section



← Interpretive Landscape | Outdoor Classroom | Interpretive Pavilion | Entry Plaza and Picnic Shelters | Parking Lot →





Aerial view



Aerial view looking down peninsula

