

Hughes Scenic River Report Rappahannock, Madison and Culpeper Counties



Prepared By

Department of Conservation and Recreation
Division of Planning and Recreation Resources

December 2009

Table of Contents

I. REASON FOR THE STUDY.....	1
A. Benefits of Designation.....	1
B. Designation Process.....	1
II. SUMMARY AND FINDINGS.....	2
III. CORRIDOR STUDY MAP.....	2
IV. ENVIRONMENTAL ANALYSIS.	3
A. River Corridor Vegetation.....	3
B. Riverbed and/or River Flow Modifications.....	4
C. Human Development of Visual Corridor.....	4
D. Historic Features.....	4
E. Landscape.....	5
F. Quality of Fishery.....	6
G. Special Natural Flora and Fauna.....	6
H. Water Quality.....	7
I. Parallel Roads.....	7
J. Crossings.....	8
K. Special Features Affecting River Aesthetics.....	8
L. Recreational Access	9
M. Land Conservation.	10
V. LAND USE AND OWNERSHIP.....	10
VI. CONCLUSIONS AND RECOMMENDATIONS.....	10
VII. CONSERVATION PLAN.....	11
VII. ANTICIPATED COST OF DESIGNATION.....	11
IX. COMMENTS/ RESOLUTIONS.....	12
X. APPENDIX.....	13
A. Species Ranking definitions of DCR Natural Heritage	
B. Department of Game and Inland Fisheries List	
C. Support documents	
D. Proposed Legislation	

I. REASON FOR THE STUDY

The Hughes Scenic River study in Rappahannock, Madison and Culpeper Counties was undertaken at the initial request from the Rappahannock County Board of Supervisors via their county administrator and confirming letters from Culpeper and Madison Counties.

The Scenic Rivers Act, found in Title 10.1, Chapter 4, Sections 10.1-400 through 10.1-418.1 of the *Code of Virginia*, enacted in 1970, is a means of protecting the Commonwealth's scenic rivers and their immediate environs. In order to be eligible for scenic river designation, a river, or section thereof, must contain substantial natural, scenic, recreational and historical attributes. At the request of the locality, DCR does an evaluation and writes a report documenting these attributes. Since the passage of the Act, twenty-four (24) river segments, totaling over 529 miles, have received Scenic River designation by the General Assembly.

A. Benefits of Designation

The Virginia Scenic River designation accomplishes the following:

- it requires the Federal Energy Commission (FERC) to consider the impact of proposed hydropower or related projects on a designated Scenic River using the Scenic River report developed in the qualification process,
- it requires all state agencies to consider visual, natural and recreational values of a Scenic River in their planning and permitting process (Section 10.1-402),
- it gives riparian landowners, local citizens and local governments a greater voice in the planning and implementation of federal and state projects that might affect the river (Section 10.1-406),
- it requires authorization by the General Assembly for the construction, operation and/or maintenance of any structure, such as a dam, that will impede the natural flow of a Scenic River (Section 10.1-407), and
- it allows riparian landowners to continue using their land as they did before designation, except for the Section 10.1-407 provision noted above (Section 10.1-408).

B. Designation Process

Scenic river evaluations involve a map survey, a related literature review and a field study to validate existing land use information and rank the river according to the relative uniqueness or quality. Each river, or river segment, is evaluated on twelve (12) different factors or criteria, which were established to provide a uniform gauge by which all studied rivers are measured. Field evaluations include actually canoeing or boating the stretch of river or river being evaluated and rating the characteristics of the resource. The evaluation criteria are: River Corridor Vegetation, Riverbed and/or River Flow Modifications, Human Development of Visual Corridor, Historic Features, Landscape, Quality of Fishery, Special Natural Fauna, Water Quality, Parallel Roads, Crossings, Special Features Affecting River Aesthetics, Recreational Access and Land Conservation. A summary of the evaluation results is included in Section IV. Environmental Analysis.

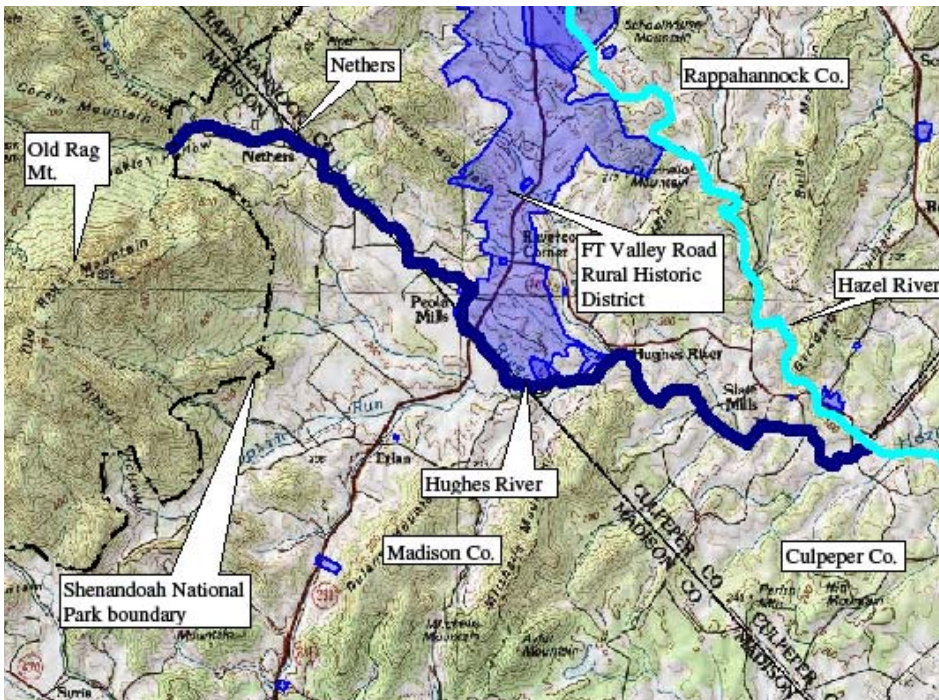
The Act instructs the DCR to conduct "studies of rivers or sections of rivers to be considered for designation" and to "recommend to the Governor and to the General Assembly rivers or sections thereof to be considered for designation as scenic rivers." This report is a fulfillment of this statutory directive.

II. SUMMARY AND FINDINGS

At the request of Rappahannock, Madison and Culpeper Counties, DCR evaluated the Hughes River from its headwaters in Shenandoah National Park to its confluence with the Hazel River at the Rappahannock – Culpeper County line, a distance of about 11 miles. As a result of the study, the section below Shenandoah National Park, shown on the following map in a heavy blue line, meets the criteria for designation. DCR therefore recommends the designation of the Hughes River in Rappahannock, Madison, and Culpeper Counties, as a designated Virginia Scenic River from the Shenandoah National Park boundary line in Madison County to its confluence with the Hazel River, a distance of approximately 10 miles. It further recommends that DCR be the administering agency.

III. CORRIDOR STUDY MAP

The Hughes River in Rappahannock, Culpeper, and Madison Counties generally flows southeast before combining with the Hazel River. This report will discuss the river segment proposed for designation from the Shenandoah National Park line in Madison County to its confluence with the Hazel River, a distance of approximately 10 miles. Note that this map is not to scale.



IV. ENVIRONMENTAL ANALYSIS

In order to determine whether the Hughes River or any part there of, was eligible for Scenic River designation, personnel from the Division of Planning and Recreation Resources (PRR) of the Department of Conservation and Recreation (DCR) conducted an analysis of the river corridor beginning in the Shenandoah National Park. Staff gathered information from sister agencies on the attributes of the corridor and conducted a field investigation, along with interested citizens, on April 9, 2009. Following is a description of the qualities and conditions of the resource that make a ten-mile section eligible for Virginia Scenic River designation.

A. River Corridor Vegetation

The Hughes River meanders through predominantly open fields used for grazing or growing hay. Where there are buffers, the buffer widths are generally less than the 100 feet recommended for water quality.

Young forests with overhanging branches flank much of the corridor. These forested riparian buffers are generally 100 feet or wider, which provide the necessary cover to protect the water quality and fish habitat.



Figure 1 Cobble riffles meander through young forests

Vegetation along the corridor is generally comprised of oak and hardwood-hickory forest communities. The few evergreen trees found along the river consist of Virginia cedars, mountain laurel and a few hemlocks. The vegetation along the corridor provides visually interesting views with a variety of forms, textures, sizes and colors. This variety provides year-round changes in the cover and views from and along the river.

B. Riverbed and/or River Flow Modifications

The river section studied is a free flowing, meandering river with some gravel bars and sandy islands. Situated in a wide valley with occasional views to the mountains where it originates, the riverbed has no manmade modifications. Natural rock ledges and outcrops add visual and paddling interest to any journey along the corridor.

C. Human Development of Visual Corridor

The upper reaches of the Hughes River corridor from the National Park Boundary downstream have a few small communities clustered at crossroads near the river. However, they are virtually invisible from the water. The center section cloaked in forests has no buildings visible from the river. The lower section has some open fields with a few visible houses. One can only see three houses or buildings from the river along the proposed section; one is a historic mansion. Over all there is not a high impact from development along the entire corridor.

D. Historic Features

There are six architectural historic sites and several archeological sites identified by the Department of Historic Resources along the proposed Hughes River section; one of these is the Meadow Green house and farm, which is eligible for National Register of Historic Places (NRHP). The rest of the sites are categorized as being of statewide significance. There is a locally significant Rural Historic District along the lower section of the river, the Francis Thornton Valley Road Rural Historic District.



Figure 2 Road in front of Meadow Green, a site eligible state and national historic designation

E. Landscape

The Hughes River flows southeast off the Blue Ridge and has its headwaters in Shenandoah National Park. It builds in size as it approaches the Hazel River. Its unique location in the landscape provides interesting outcroppings and occasional distant views of the Blue Ridge, especially Old Rag Mountain, a popular recreational spot. This variety of landscape types adds to the quality of the river experience.



Figure 3 View of Old Rag Mountain, taken from the Hughes River edge

A wonderfully intimate experience can occur when sunlight penetrates the forested sides, dappling the water surface, and interesting patterns appear on the water. A few coves and side creeks catch one's eye, offering respite from the naturally vegetated banks, and the curving alignment of the river keeps the experience fresh and interesting.

The landscape is moderately diverse and contains a variety of interesting natural features, including a braided section through a dense understory, which provides a jungle type experience. Rock cliffs push the river in a series of intricate turns back and forth before it meets the Hazel River.



Figure 4 Typical rock outcrop

F. Quality of Fishery

Although the Hughes River is a relatively small river, many know that the upper reaches of the Hughes have good fisheries. According to the Department of Game and Inland Fisheries (DGIF), the stream is classified as a put-and-take stocked trout water (Category A – DGIF’s highest). The presence of wild brook trout in the upper reaches and wild brown trout in the lower reaches makes this river unique. Coldwater habitats are limited to isolated areas of Virginia; the Hughes is such a stream of importance.

G. Special Natural Flora and Fauna

A number of factors combine to create an environment for supporting a diversity of wildlife species in the area. These include the river, the rural nature of the area, the mixture of forest and agricultural lands and the extensive edge effects that are created between the different land types and uses. The Hughes’ riparian corridors get extensive travel by bear, deer and turkey as well as numerous smaller species. Eagles have been observed on nearby tributaries along with great blue herons, red-shouldered hawks, and similar varieties that inhabit stream valleys.

The Natural Heritage Program of the Department of Conservation and Recreation identifies areas that have a biodiversity significance ranking based on the rarity, quality,

and number of element occurrences they contain. There is interest along the Hughes corridor for historically documented populations of *Pyrola elliptica* (Shinleaf, G5/S2) and *Pyrola chlorantha* (Greenish-flowered Wintergreen, G5/SH), state imperiled plants. Shinleaf is a perennial herb that blooms in summer and does best in shaded humus-rich, acid soil. Greenish-flowered Wintergreen is a perennial subshrub that blooms in summer and does best in dry woods.

H. Water Quality

The water quality of the proposed Hughes River section is excellent with no visible pollution. The Hughes fully supports aquatic life, wildlife, and recreation uses. The water quality rates as exceptionally high. The buffers that are in place for more than 75% of the corridor and the lack of exposed earth along the banks help control the common effects of stormwater run-off. The Virginia Department of Health has no health hazard advisories for fish consumption on the Hughes. In this section of the river there are no sewage treatment facilities that flow directly into the Hughes River.



Figure 5 Clear waters exist along most of the river corridor

I. Parallel Roads

On the upper reach of the corridor, a parallel road provides access for anglers. The road itself ducks in and out of trees and is virtually invisible, except when vehicles travel along it. The rest of the river has intermittent parallel roads, which are mostly narrow dirt roads that are only noticeable when vehicles are using them.

J. Crossings

There are many crossings along the entire length of the river. Although the crossings provide visual and physical access to the river, they can also interrupt river travel. Unlike many of the river corridors in the area, there are no fences interrupting travel along the river. A majority of the crossings in the upper section are access roads to homes. Below Route 231, the frequency of crossings diminishes greatly, which contributes to a sense of remoteness. Due to the meandering of the river, the visual impact of each crossing is limited.

K. Special Features Affecting the Aesthetics

The river is isolated with scenic, interesting and aesthetic attributes derived from a variety of natural features. Though not a river of great gradient change, there are some islands, rock formations, gravel bars, riffles and Class I rapids along the corridor. Different rock formations, outcrops with moss covering and jagged boulders create a sense of anticipation and wonder along the corridor.



Figure 6 Riffles, gravel bars and islands offer added interest to the corridor

The largest bluff along the corridor is almost 100 feet high and is not clearly visible during leaf-out. However, most of the bluffs range in height from 15 to 50 feet, adding interest along the corridor.

The river corridor itself contains several large and small bends, or meanders, resulting in the creation of interesting visual perspectives and the anticipation of discovering what views or experiences may be ‘just around the bend.’ In addition, areas

of ripples, benches of gravel, fallen trees and stretches of flat water all contribute to an interesting trip down the river.



A few cultural features give a sense of place, ownership and care to the experience. Among them is the historic Meadow Green house and farm, Sharp Rock winery, and an old mill.

Figure 8 Old mill along the river

L. Recreational Access

Known throughout the state for its excellent fishing, anglers coming to the Hughes get access through public bridge crossings and agreements with private property owners. The nature of the river limits paddling to high-flow times, usually in the spring. Paddlers and tubers get their access at public bridge crossings. There are no developed boat launching sites or public trails along the entire length of the proposed river corridor.



Figure 7 Paddling through rapids and boulders

M. Land Conservation

Although there is a great interest in conservation easements in Rappahannock County, and the only ones along the river are in that county, relatively little of the river has protection from conservation easements.

V. LAND USE AND OWNERSHIP

Land use in the study corridor is open fields and forest with scattered pasture and very few residences, once the river crosses under Route 231. Future planning does not include any development along the corridor that would detract from the scenic value of the river corridor, and much of the corridor is already in conservation easement. The future comprehensive plans for Rappahannock, Madison and Culpeper Counties maintain the area in agriculture and/or future conservation areas.

VI. CONCLUSIONS AND RECOMMENDATIONS

The Department of Conservation and Recreation concludes that the Hughes River in Rappahannock, Culpeper and Madison Counties from the Shenandoah National Park line in Madison County to its confluence with the Hazel River, a distance of approximately 10 miles, qualifies for inclusion in the Virginia Scenic River System. Scenic River designation is warranted because of the aesthetic and recreational qualities of the river section, its environs, the unique flora and fauna, and historic sites along the corridor.

Flowing through largely agricultural and forested land, this attractive river segment possesses a number of interesting aesthetic features including rock formations, several islands, sections of riffles, a rural historic district, and a meandering alignment with inviting short and long views. The adjacent landscape consists of interesting natural elements, few manmade features, and varied terrain and vegetation. Human development in the river corridor includes some agriculture and a few residences.

This section of the Hughes River is predominantly a coldwater stream of high water quality. The presence of unique flora and fauna along the Hughes River add much to the value of this scenic river corridor.

Considering all the aspects of the Hughes River section in Madison, Culpeper and Rappahannock Counties, DCR recommends it for Virginia Scenic River designation.

It is recommended that:

1. The Hughes River within Madison, Rappahannock and Culpeper Counties, from the Shenandoah National Park boundary line in Madison County to its confluence with the Hazel River, a distance of approximately 10 miles, be recommended for Virginia Scenic River Designation;
2. The Department of Conservation and Recreation should be appointed the Administering Agency.

VII. CONSERVATION PLAN

There are three elements to the conservation plan for the Hughes River. These elements call for a minimum effort and specific actions on the part of the General Assembly, local and state units of government, and individual and riparian landowners.

Legislation establishing Virginia Scenic River designation for the section of the Hughes River under consideration is the first element that must be implemented. In addition to clearly expressing the policy intent of the Commonwealth with regard to protection and conservation of the river, designation will focus attention on the river as a natural resource of statewide significance. The increased attention will help ensure a greater scrutiny of plans or proposals that have the potential to significantly alter or destroy those resource qualities that make the river worthy of designation. The state Scenic River Advisory Board will give local residents an additional avenue for formal input into decisions that would impact the river.

A second element of the Conservation Plan involves Rappahannock, Madison and Culpeper Counties. Each of the Counties' land use plans reflect their citizens' recognition, appreciation and concern for the river and the valuable role it plays in their community's quality of life. Such plans are in part a protection of the river and its environs from potential development, and should make sure that if development occurs that it utilizes low impact development strategies as much as possible.

The final element of the Conservation Plan is the continued individual stewardship of local and riparian landowners. Over the years, the stewardship of the river corridor has contributed to the river's qualifications for designation. If not for this stewardship, the characteristics necessary for inclusion in the Virginia Scenic River System might not exist. Through continued stewardship efforts, the scenic and natural character of the river can be protected.

Action by the General Assembly to designate the section of the Hughes River and the carefully coordinated efforts of Culpeper, Madison and Rappahannock Counties should combine to protect the natural and scenic qualities of the recommended section of the Hughes River for the enjoyment of future generations. Proposed Legislation is provided in the Appendix.

VIII. ANTICIPATED COST OF DESIGNATION

The only anticipated direct costs as a result of the designation will be those incurred by the Department of Conservation and Recreation (DCR) as a result of its duties as administrator of the river. At present, these costs are estimated to be in the range of \$1,000 per year.

IX. AGENCY COMMENTS/RESOLUTIONS

A draft report is being circulated for review among the DCR Divisions, other state agencies, Rappahannock County and RappFLOW. Their comments and any support documents are and will be included in the Appendix of this report.

- X. APPENDIX**
 - A. Species Ranking Definitions of DCR Natural Heritage
 - B. Department of Game and Inland Fisheries List
 - C. Support documents
 - D. Proposed Legislation

A. Species Ranking definitions of DCR Natural Heritage

SCIENTIFIC NAME	COMMON NAME	GLOBAL RANK	STATE RANK
Pyrola elliptica	Shinleaf	G5	S2
Pyrola chlorantha	Greenish-flowered Wintergreen	G5	SH

Definitions of Abbreviations used on Natural Heritage Resource Lists

The following ranks are used by the Virginia Department of Conservation and Recreation to set protection priorities for natural heritage resources. Natural Heritage Resources, or "NHR's," are rare plant and animal species, rare and exemplary natural communities, and significant geologic features. The criterion for ranking NHR's is the number of populations or occurrences, i.e. the number of known distinct localities; the number of individuals in existence at each locality or, if a highly mobile organism (e.g., sea turtles, many birds, and butterflies), the total number of individuals; the quality of the occurrences, the number of protected occurrences; and threats.

- **S1** - Critically imperiled in the state because of extreme rarity or because of some factor(s) making it especially vulnerable to extirpation from the state. Typically 5 or fewer populations or occurrences; or very few remaining individuals (<1000).
- **S2** - Imperiled in the state because of rarity or because of some factor(s) making it very vulnerable to extirpation from the state. Typically 6 to 20 populations or occurrences or few remaining individuals (1,000 to 3,000).
- **S3** - Vulnerable in the state either because rare and uncommon, or found only in a restricted range (even if abundant at some locations), or because of other factors making it vulnerable to extirpation. Typically 21 to 100 populations or occurrences (1,000 to 3,000).
- **S4** - Apparently secure; Uncommon but not rare, and usually widespread in the state. Possible cause of long-term concern. Usually >100 populations or occurrences and more than 10,000 individuals.
- **S5** - Secure; Common, widespread and abundant in the state. Essentially ineradicable under present conditions. Typically with considerably more than 100 populations or occurrences and more than 10,000 individuals.
- **S#B** - Breeding status of an animal within the state
- **S#N** - Non-breeding status of animal within the state. Usually applied to winter resident species.
- **S#?** - Inexact or uncertain numeric rank.
- **SH** - Possibly extirpated (Historical). Historically known from the state, but not verified for an extended period, usually > 15 years; this rank is used primarily when inventory has been attempted recently.
- **S#S#** - Range rank; A numeric range rank, (e.g. S2S3) is used to indicate the range of uncertainty about the exact status of the element. Ranges cannot skip more than one rank.
- **SU** - Unrankable; Currently unrankable due to lack of information or due to substantially conflicting information about status or trends.
- **SNR** - Unranked; state rank not yet assessed.
- **SX** - Presumed extirpated from the state. Not located despite intensive searches of historical sites and other appropriate habitat, and virtually no likelihood that it will be rediscovered.
- **SNA** - A conservation status rank is not applicable because the element is not a suitable target for conservation activities.

Global Ranks are similar, but refer to a species' rarity throughout its total range. Global ranks are denoted with a "G" followed by a character. Note GX means the element is presumed extinct throughout its range, not relocated despite intensive searches of historical sites/appropriate habitat, and virtually no likelihood that it will be rediscovered. A "Q" in a rank indicates that a taxonomic question concerning that species exists. Ranks for subspecies are denoted with a "T". The global and state ranks combined (e.g. G2/S1) give an instant grasp of a species' known rarity.

These ranks should not be interpreted as legal designations.

FEDERAL STATUS

The Division of Natural Heritage uses the standard abbreviations for Federal endangerment developed by the U.S. Fish and Wildlife Service, Division of Endangered Species and Habitat Conservation.

LE - Listed Endangered **LT** - Listed Threatened **PE** - Proposed Endangered
PT - Proposed Threatened
C - Candidate (formerly C1 - Candidate category 1)
E(S/A) - treat as endangered because of similarity of appearance
T(S/A) - treat as threatened because of similarity of appearance
SOC - Species of Concern species that merit special concern (not a regulatory category)

STATE LEGAL STATUS

The Division of Natural Heritage uses similar abbreviations for State endangerment:

LE - Listed Endangered **PE** - Proposed Endangered
SC - Special Concern - animals that merit special concern according to VDGIF (not a regulatory category)
LT - Listed Threatened **PT** - Proposed Threatened **C** - Candidate

For information on the laws pertaining to threatened or endangered species, please contact:

U.S. Fish and Wildlife Service for all **FEDERALLY** listed species;
Department of Agriculture and Consumer Services, Plant Protection Bureau for **STATE** listed plants and insects
Department of Game and Inland Fisheries for all other **STATE** listed animals

CONSERVATION SITES RANKING

Brank is a rating of the significance of the conservation site based on presence and number of natural heritage resources; on a scale of 1-5, 1 being most significant. Sites are also coded to reflect the presence/absence of federally/state listed species:

Conservation Site Ranks

B1 - Outstanding significance
B2 - Very High significance
B3 - High significance
B4 - Moderate significance
B5 - Of general Biodiversity significance

Legal Status of Sites

FL - Federally listed species present
SL - State listed species present
NL - No listed species present



Virginia Department of Game and Inland Fisheries

11/3/2009 1:45:15 PM

Fish and Wildlife Information Service

VaFWIS Search Report Compiled on 11/3/2009, 1:45:15 PM

[Help](#)

Database Search in (RA08) Hughes River [HU6], VA

137 Known or Likely Species

BOVA Code	Status*	Tier**	Common Name	Scientific Name	Confirmed	Database(s)
010001		IV	Lamprey, least brook	Lampetra aepyptera		BOVA
010050			Trout, rainbow	Oncorhynchus mykiss	Yes	Collections
010051			Trout, brown	Salmo trutta	Yes	Collections
010052			Trout, brook	Salvelinus fontinalis	Yes	Collections
010060			Dace, mountain redbelly	Phoxinus oreas	Yes	Collections
010063			Minnow, cutlips	Exoglossum maxillingua	Yes	Collections
010066			Chub, bluehead	Nocomis leptcephalus	Yes	Collections
010067			Chub, river	Nocomis micropogon	Yes	Collections
010072			Shiner, comely	Notropis amoenus	Yes	Collections
010073			Shiner, satinfin	Cyprinella analostana	Yes	Collections
010080			Shiner, common	Luxilus cornutus	Yes	Collections
010086			Shiner, swallowtail	Notropis procne	Yes	Collections
010087			Shiner, highland (= southern rosyface; = redface)	Notropis micropteryx	Yes	Collections
010101			Dace, blacknose	Rhinichthys atratulus	Yes	Collections
010102			Dace, longnose	Rhinichthys cataractae	Yes	Collections
010103			Chub, creek	Semotilus atromaculatus	Yes	Collections
010104			Fallfish	Semotilus corporalis	Yes	Collections
010105			Sucker, white	Catostomus commersoni	Yes	Collections
010106			Chubsucker, creek	Erimyzon oblongus	Yes	Collections
010108			Sucker, northern hog	Hypentelium nigricans	Yes	Collections
010118			Sucker, torrent	Thoburnia rathoeca	Yes	Collections
010129			Madtom, margined	Noturus insignis	Yes	Collections
010131		IV	Eel, American	Anguilla rostrata		BOVA, Collections
010175			Bass, rock	Ambloplites rupestris	Yes	Collections
010180			Sunfish, redbreast	Lepomis auritus	Yes	Collections

http://vafwis.org/fwis/NewPages/VaFWIS_report_search.asp?lastMenu=Home.Database+Search&tm=1&s... 11/3/2009

010181			Sunfish, green	Lepomis cyanellus	Yes	Collections
010183			Bluegill	Lepomis macrochirus	Yes	Collections
010186			Bass, smallmouth	Micropterus dolomieu	Yes	Collections
010213			Darter, shield	Percina peltata	Yes	Collections
010283			Sculpin, mottled	Cottus bairdi	Yes	Collections
010359		IV	Lamprey, American brook	Lampetra appendix		BOVA, Collections
010366			Dace, rosyside	Clinostomus funduloides	Yes	Collections
010367			Minnow, silverside	Ericynba buccatus	Yes	Collections
010373			Chub, bull	Nocomis raneyi	Yes	Collections
010397			Darter, tessellated	Etheostoma olmstedti	Yes	Collections
020013			Frog, pickerel	Lithobates palustris	Yes	ObsBook
020031		IV	Salamander, Jefferson	Ambystoma jeffersonianum		BOVA, Collections
020035			Salamander, marbled	Ambystoma opacum	Yes	Collections
020038			Salamander, northern dusky	Desmognathus fuscus	Yes	Collections
020043			Salamander, eastern red-backed	Plethodon cinereus	Yes	Collections
020045	FESE	I	Salamander, Shenandoah	Plethodon shenandoah		BOVA, Collections
020048			Salamander, southern dusky	Desmognathus auriculatus	Yes	Collections
020050			Salamander, southern two-lined	Eurycea cirrigera	Yes	Collections
020051			Salamander, three-lined	Eurycea guttolineata	Yes	Collections
020053			Salamander, northern two-lined	Eurycea bislineata	Yes	Collections
020062			Toad, Fowler's	Anaxyrus fowleri	Yes	Collections
020070			Salamander, northern red	Pseudonoton ruber ruber	Yes	Collections
020075			Salamander, seal	Desmognathus monticola	Yes	Collections
020077			Salamander, northern spring	Gyrinophilus porphyriticus porphyriticus	Yes	Collections
020080			Salamander, white-spotted slimy	Plethodon cylindraceus	Yes	Collections
030004			Skink, common five-lined	Plestiodon fasciatus	Yes	Collections
030012	CC	IV	Rattlesnake, timber	Crotalus horridus		BOVA, Collections
030016			Copperhead, northern	Agkistrodon contortrix mokasen	Yes	Collections

030019			Wormsnake, eastern	Carphophis amoenus amoenus	Yes	Collections
030020			Snake, northern ring-necked	Diadophis punctatus edwardsii	Yes	Collections
030022			Cornsake, red	Pantherophis guttatus	Yes	Collections
030023			Ratsnake, eastern	Pantherophis alleghamiensis	Yes	Collections
030024		IV	Snake, eastern hog-nosed	Heterodon platirhinos		BOVA
030029			Milksnake, eastern	Lampropeltis triangulum triangulum	Yes	Collections
030033		IV	Snake, queen	Regina septemvittata		BOVA
030039		III	Greensnake, smooth	Opheodrys vernalis		BOVA
030045		IV	Ribbonsnake, common	Thamnophis sauritus sauritus		BOVA
030060			Turtle, eastern painted	Chrysemys picta picta	Yes	ObsBook
030063	CC	III	Turtle, spotted	Clemmys guttata		BOVA
030068		III	Turtle, eastern box	Terrapene carolina carolina		BOVA
040028		IV	Heron, green	Butorides virescens		BOVA
040038		II	Bittern, American	Botaurus lentiginosus	Yes	ObsBook
040052		II	Duck, American black	Anas rubripes		BOVA
040093	FSST	II	Eagle, bald	Haliaeetus leucocephalus		BOVA
040094	SS	III	Harrier, northern	Circus cyaneus		BOVA
040096	ST	I	Falcon, peregrine	Falco peregrinus		BOVA
040100		IV	Bobwhite, northern	Colinus virginianus		BOVA
040101			Pheasant, ring-necked	Phasianus colchicus	Yes	Collections
040140		IV	Woodcock, American	Scolopax minor		BOVA
040202		IV	Cuckoo, yellow-billed	Coccyzus americanus		BOVA
040204	SS	III	Owl, barn	Tyto alba pratincola		BOVA
040206			Owl, great horned	Bubo virginianus	Yes	Collections
040214		IV	Chuck-will's-widow	Caprimulgus carolinensis		BOVA
040215		IV	Whip-poor-will	Caprimulgus vociferus		BOVA
040217		IV	Swift, chimney	Chaetura pelagica		BOVA
040218			Hummingbird, ruby-throated	Archilochus colubris	Yes	Collections
040221			Flicker, northern	Colaptes auratus	Yes	Collections

040229		IV	Kingbird, eastern	Tyrannus tyrannus		BOVA
040240		IV	Flycatcher, willow	Empidonax traillii		BOVA
040243		IV	Pewee, eastern wood	Contopus virens		BOVA, Collections
040248		IV	Swallow, northern rough-winged	Stelgidopteryx serripennis		BOVA
040252			Jay, blue	Cyanocitta cristata	Yes	Collections
040258			Chickadee, Carolina	Poecile carolinensis	Yes	Collections
040262	SS		Nuthatch, red-breasted	Sitta canadensis	Yes	Collections
040264	SS	IV	Creeper, brown	Certhia americana		BOVA
040266	SS	II	Wren, winter	Troglodytes troglodytes		BOVA, Collections
040269		IV	Wren, marsh	Cistothorus palustris		BOVA, ObsBook
040272		IV	Catbird, gray	Dumetella carolinensis		BOVA, Collections
040273		IV	Thrasher, brown	Toxostoma rufum		BOVA
040277		IV	Thrush, wood	Hylocichla mustelina		BOVA, Collections
040281			Veery	Catharus fascescens	Yes	Collections
040293	ST	I	Shrike, loggerhead	Lanius ludovicianus		BOVA
040297		IV	Vireo, yellow-throated	Vireo flavifrons		BOVA
040299			Vireo, red-eyed	Vireo olivaceus	Yes	Collections
040302		IV	Warbler, black-and-white	Mniotilta varia		BOVA, Collections
040303		IV	Warbler, prothonotary	Protonotaria citrea		BOVA
040305		IV	Warbler, worm-eating	Helmitheros vermivorus		BOVA, Collections
040306	SS	I	Warbler, golden-winged	Vermivora chrysoptera		BOVA
040312		IV	Parula, northern	Parula americana		BOVA
040313		IV	Warbler, yellow	Dendroica petechia		BOVA, ObsBook
040319		I	Warbler, black-throated green	Dendroica virens	Yes	Collections
040320		II	Warbler, cerulean	Dendroica cerulea		BOVA
040328		IV	Warbler, prairie	Dendroica discolor		BOVA
040330		IV	Ovenbird	Seiurus aurocapilla		BOVA, Collections
040332		IV	Waterthrush, Louisiana	Seiurus motacilla		BOVA
040333		IV	Warbler, Kentucky	Oporornis formosus		BOVA
040337		IV	Chat, yellow-breasted	Icteria virens virens		BOVA
040338			Warbler, hooded	Wilsonia citrina	Yes	Collections
040340		IV	Warbler, Canada	Wilsonia canadensis		BOVA, Collections
040341			Redstart, American	Setophaga ruticilla	Yes	Collections

VAFWIS Search Report

040344		IV	Meadowlark, eastern	Sturnella magna		BOVA
040347			Oriole, orchard	Icterus spurius	Yes	ObsBook
040349		IV	Blackbird, rusty	Euphagus carolinus		BOVA
040355		IV	Tanager, scarlet	Piranga olivacea		BOVA
040358		IV	Grosbeak, rose-breasted	Pheucticus ludovicianus		BOVA, Collections
040371			Goldfinch, American	Carduelis tristis	Yes	ObsBook
040375		IV	Towhee, eastern	Pipilo erythrophthalmus		BOVA, Collections
040378		IV	Sparrow, grasshopper	Ammodramus savannarum pratensis		BOVA, ObsBook
040387			Junco, dark-eyed	Junco hyemalis	Yes	Collections
040388			Sparrow, American tree	Spizella arborea	Yes	ObsBook
040391		IV	Sparrow, field	Spizella pusilla		BOVA
050040		IV	Weasel, least	Mustela nivalis allegheniensis		BOVA
050046		IV	Skunk, eastern spotted	Spilogale putorius putorius		BOVA
050081		IV	Woodrat, Allegheny	Neotoma magister	Yes	Collections
050106		IV	Cottontail, Appalachian	Sylvilagus obscurus		BOVA
060176		IV	Spike, Atlantic	Elliptio producta		BOVA
060180		III	Springsnail, Blue Ridge	Fontigens orolibus		BOVA
100155	FSST	I	Skipper, Appalachian grizzled	Pyrgus wyandot		BOVA
100248	FS	I	Fritillary, regal	Speyeria idalia idalia		BOVA
110058		III	Glyph, depressed	Glyphyalinia virginica		BOVA
110118		III	Slug, variable mantle	Pallifera varia		BOVA
110158		IV	Snail, ribbed striate	Striatula exigua		BOVA

* FE=Federal Endangered; FT=Federal Threatened; SE=State Endangered; ST=State Threatened; FP=Federal Proposed; FC=Federal Candidate; FS=Federal Species of Concern; SC=State Candidate; CC=Collection Concern; SS=State Special Concern

** I=VA Wildlife Action Plan - Tier I - Critical Conservation Need; II=VA Wildlife Action Plan - Tier II - Very High Conservation Need; III=VA Wildlife Action Plan - Tier III - High Conservation Need; IV=VA Wildlife Action Plan - Tier IV - Moderate Conservation Need

audit no. 266177 11/3/2009 1:45:15 PM Virginia Fish and Wildlife Information Service

© 1998-2009 Commonwealth of Virginia Department of Game and Inland Fisheries

http://vafwis.org/fwis/NewPages/VaFWIS_report_search.asp?lastMenu=Home+Database+Search&tm=1&ts...



Virginia Department of Game and Inland Fisheries

11/3/2009 1:51:44 PM

Fish and Wildlife Information Service

VaFWIS Search Report Compiled on 11/3/2009, 1:51:44 PM

[Help](#)

Database Search in (E03) HUGHES RIVER [SHU], VA

236 Known or Likely Species

BOVA Code	Status*	Tier**	Common Name	Scientific Name	Confirmed	Database(s)
010050			Trout, rainbow	Oncorhynchus mykiss		BOVA,Collections
010051			Trout, brown	Salmo trutta		BOVA,Collections
010052			Trout, brook	Salvelinus fontinalis		BOVA,Collections
010060			Dace, mountain redbelly	Phoxinus oreas		BOVA,Collections
010063			Minnow, cutlips	Exoglossum maxillingua		BOVA,Collections
010066			Chub, bluehead	Nocomis leptocephalus	Yes	Collections
010067			Chub, river	Nocomis micropogon		BOVA,Collections
010072			Shiner, comely	Notropis amoenus	Yes	Collections
010073			Shiner, satinfin	Cyprinella analostana	Yes	Collections
010080			Shiner, common	Luxilus cornutus		BOVA,Collections
010086			Shiner, swallowtail	Notropis procne	Yes	Collections
010087			Shiner, highland (= southern rosyface; = redface)	Notropis micropteryx	Yes	Collections
010101			Dace, blacknose	Rhinichthys atratulus		BOVA,Collections
010102			Dace, longnose	Rhinichthys cataractae		BOVA,Collections
010103			Chub, creek	Semotilus atromaculatus		BOVA,Collections
010104			Fallfish	Semotilus corporalis		BOVA,Collections
010105			Sucker, white	Catostomus commersoni		BOVA,Collections
010106			Chubsucker, creek	Erimyzon oblongus	Yes	Collections
010108			Sucker, northern hog	Hypentelium nigricans		BOVA,Collections
010118			Sucker, torrent	Thoburnia rathoeca		BOVA,Collections
010129			Madtom, margined	Noturus insignis		BOVA,Collections
010131		IV	Eel, American	Anguilla rostrata	Yes	Collections
010175			Bass, rock	Ambloplites rupestris		BOVA,Collections
010180			Sunfish, redbreast	Lepomis auritus	Yes	Collections
010181			Sunfish, green	Lepomis cyanellus	Yes	Collections

http://vafwis.org/fwis/NewPages/VaFWIS_report_search.asp?lastMenu=Home.Database+Search&tn=.1&s... 11/3/2009

010183			Bluegill	Lepomis macrochirus	Yes	Collections
010186			Bass, smallmouth	Micropterus dolomieu		BOVA, Collections
010213			Darter, shield	Percina peltata	Yes	Collections
010283			Sculpin, mottled	Cottus bairdi		BOVA, Collections
010359		IV	Lamprey, American brook	Lampetra appendix	Yes	Collections
010366			Dace, rosyside	Clinostomus funduloides		BOVA, Collections
010367			Minnow, silverjaw	Ericymba buccatus	Yes	Collections
010373			Chub, bull	Nocomis raneyi	Yes	Collections
010397			Darter, tessellated	Etheostoma olmstedii		BOVA, Collections
020013			Frog, pickerel	Lithobates palustris	Yes	ObsBook
020031		IV	Salamander, Jefferson	Ambystoma jeffersonianum		BOVA, Collections
020035			Salamander, marbled	Ambystoma opacum		BOVA, Collections
020038			Salamander, northern dusky	Desmognathus fuscus		BOVA, Collections
020043			Salamander, eastern red-backed	Plethodon cinereus		BOVA, Collections
020045	FESE	I	Salamander, Shenandoah	Plethodon shenandoah		BOVA, Collections
020048			Salamander, southern dusky	Desmognathus auriculatus		BOVA, Collections
020050			Salamander, southern two-lined	Eurycea cirrigera		BOVA, Collections
020051			Salamander, three-lined	Eurycea guttolineata	Yes	Collections
020053			Salamander, northern two-lined	Eurycea bislineata		BOVA, Collections
020062			Toad, Fowler's	Anaxyrus fowleri	Yes	Collections
020070			Salamander, northern red	Pseudotriton ruber ruber		BOVA, Collections
020075			Salamander, seal	Desmognathus monticola		BOVA, Collections
020077			Salamander, northern spring	Gyrinophilus porphyriticus porphyriticus		BOVA, Collections
020080			Salamander, white-spotted slimy	Plethodon cylindraceus		BOVA, Collections
030004			Skink, common five-lined	Plestiodon fasciatus		BOVA, Collections
030012	CC	IV	Rattlesnake, timber	Crotalus horridus	Yes	Collections
030016			Copperhead, northern	Agkistrodon contortrix mokasen		BOVA, Collections
030019			Wormsnake, eastern	Carphophis amoenus amoenus	Yes	Collections

030020		Snake, northern ring-necked	Diadophis punctatus edwardsii		BOVA, Collections
030022		Cornsake, red	Pantherophis guttatus	Yes	Collections
030023		Ratsnake, eastern	Pantherophis alleghaniensis		BOVA, Collections
030029		Milksnake, eastern	Lampropeltis triangulum triangulum	Yes	Collections
030060		Turtle, eastern painted	Chrysemys picta picta	Yes	ObsBook
040003		Loon, red-throated	Gavia stellata		BOVA
040005	IV	Grebe, horned	Podiceps auritus		BOVA
040008		Grebe, pied-billed	Podilymbus podiceps		BOVA
040027		Heron, great blue	Ardea herodias herodias		BOVA
040028	IV	Heron, green	Butorides virescens		BOVA
040035	III	Night-heron, black-crowned	Nycticorax nycticorax hoactii		BOVA
040038	II	Bittern, American	Botaurus lentiginosus	Yes	ObsBook
040044		Swan, tundra	Cygnus columbianus columbianus		BOVA
040045		Goose, Canada	Branta canadensis		BOVA
040051		Mallard	Anas platyrhynchos		BOVA
040052	II	Duck, American black	Anas rubripes		BOVA
040053		Gadwall	Anas strepera		BOVA
040054		Pintail, northern	Anas acuta acuta		BOVA
040056		Teal, green-winged	Anas crecca carolinensis		BOVA
040057		Teal, blue-winged	Anas discors orphna		BOVA
040059		Wigeon, American	Anas americana		BOVA
040061		Duck, wood	Aix sponsa		BOVA
040062	III	Redhead	Aythya americana		BOVA
040063		Duck, ring-necked	Aythya collaris		BOVA
040064		Canvasback	Aythya valisineria		BOVA
040065	IV	Scaup, greater	Aythya marila		BOVA
040066		Scaup, lesser	Aythya affinis		BOVA
040067		Goldeneye, common	Bucephala clangula americana		BOVA
040068		Rufflehead	Bucephala albeola		BOVA
040069		Duck, long-tailed	Clangula hyemalis		BOVA
040076		Duck, ruddy	Oxyura jamaicensis		BOVA
040077		Merganser, hooded	Lophodytes cucullatus		BOVA
			Mergus merganser		

http://vafwis.org/fwis/NewPages/VaFWIS_report_search.asp?lastMenu=Home Database+Search&tm=1&ts... 11/

VAFWIS Search Report

040078			<u>Merganser, common</u>	americanus	BOVA
040080			<u>Vulture, turkey</u>	Cathartes aura	BOVA
040081			<u>Vulture, black</u>	Coragyps atratus	BOVA
040084			<u>Goshawk, northern</u>	Accipiter gentilis	BOVA
040085			<u>Hawk, sharp-shinned</u>	Accipiter striatus velox	BOVA
040086			<u>Hawk, Cooper's</u>	Accipiter cooperii	BOVA
040087			<u>Hawk, red-tailed</u>	Buteo jamaicensis	BOVA
040088			<u>Hawk, red-shouldered</u>	Buteo lineatus lineatus	BOVA
040089			<u>Hawk, broad-winged</u>	Buteo platypterus	BOVA
040090			<u>Hawk, rough-legged</u>	Buteo lagopus johannis	BOVA
040094	SS	III	<u>Harrier, northern</u>	Circus cyaneus	BOVA
040095			<u>Osprey</u>	Pandion haliaetus carolinensis	BOVA
040097			<u>Merlin</u>	Falco columbarius	BOVA
040098			<u>Kestrel, American</u>	Falco sparverius sparverius	BOVA
040099			<u>Grouse, ruffed</u>	Bonasa umbellus	BOVA
040100		IV	<u>Bobwhite, northern</u>	Colinus virginianus	BOVA
040101			<u>Pheasant, ring-necked</u>	Phasianus colchicus	BOVA, Collections
040102			<u>Turkey, wild</u>	Meleagris gallopavo silvestris	BOVA
040113			<u>Coot, American</u>	Fulica americana	BOVA
040119			<u>Killdeer</u>	Charadrius vociferus	BOVA
040140		IV	<u>Woodcock, American</u>	Scolopax minor	BOVA
040141			<u>Snipe, common</u>	Gallinago gallinago	BOVA
040170			<u>Gull, ring-billed</u>	Larus delawarensis	BOVA
040197			<u>Pigeon, rock</u>	Columba livia	BOVA
040198			<u>Dove, mourning</u>	Zenaida macroura carolinensis	BOVA
040202		IV	<u>Cuckoo, yellow-billed</u>	Coccyzus americanus	BOVA
040203			<u>Cuckoo, black-billed</u>	Coccyzus erythrophthalmus	BOVA
040204	SS	III	<u>Owl, barn</u>	Tyto alba pratincola	BOVA
040205			<u>Screech-owl, eastern</u>	Megascops asio	BOVA
040206			<u>Owl, great horned</u>	Bubo virginianus	BOVA, Collections
040209			<u>Owl, barred</u>	Strix varia	BOVA
040210	SS		<u>Owl, long-eared</u>	Asio otus	BOVA
040211			<u>Owl, short-eared</u>	Asio flammeus	BOVA
			<u>Owl, northern saw-</u>		

http://vafwis.org/fwis/NewPages/VaFWIS_report_search.asp?lastMenu=Home Database+Search&tm=1&ts

040213	SS	II	whet	Aegolius acadicus	BOVA
040215		IV	Whip-poor-will	Caprimulgus vociferus	BOVA
040216			Nighthawk, common	Chordeiles minor	BOVA
040217		IV	Swift, chimney	Chaetura pelagica	BOVA
040218			Hummingbird, ruby-throated	Archilochus colubris	BOVA, Collections
040220			Kingfisher, belted	Ceryle alcyon	BOVA
040221			Flicker, northern	Colaptes auratus	BOVA, Collections
040222			Woodpecker, pileated	Dryocopus pileatus	BOVA
040223			Woodpecker, red-bellied	Melanerpes carolinus	BOVA
040224			Woodpecker, red-headed	Melanerpes erythrocephalus	BOVA
040225		I	Sapsucker, yellow-bellied	Sphyrapicus varius	BOVA
040226			Woodpecker, hairy	Picoides villosus	BOVA
040227			Woodpecker, downy	Picoides pubescens medianus	BOVA
040229		IV	Kingbird, eastern	Tyrannus tyrannus	BOVA
040234			Flycatcher, great crested	Myiarchus crinitus	BOVA
040236			Phoebe, eastern	Sayornis phoebe	BOVA
040239			Flycatcher, Acadian	Empidonax vireescens	BOVA
040240		IV	Flycatcher, willow	Empidonax traillii	BOVA
040243		IV	Pewee, eastern wood	Contopus virens	BOVA, Collections
040245			Lark, horned	Eremophila alpestris	BOVA
040246			Swallow, tree	Tachycineta bicolor	BOVA
040247			Swallow, bank	Riparia riparia	BOVA
040248		IV	Swallow, northern rough-winged	Stelgidopteryx serripennis	BOVA
040249			Swallow, barn	Hirundo rustica	BOVA
040250			Swallow, cliff	Petrochelidon pyrrhonota pyrrhonota	BOVA
040251			Martin, purple	Progne subis	BOVA
040252			Jay, blue	Cyanocitta cristata	BOVA, Collections
040254			Raven, common	Corvus corax	BOVA
040255			Crow, American	Corvus brachyrhynchos	BOVA
040256			Crow, fish	Corvus ossifragus	BOVA
040257			Chickadee, black-capped	Poecile atricapillus	BOVA
040258			Chickadee, Carolina	Poecile carolinensis	BOVA, Collections

040260			Titmouse, tufted	<i>Baeolophus bicolor</i>		BOVA
040261			Nuthatch, white-breasted	<i>Sitta carolinensis</i>		BOVA
040262	SS		Nuthatch, red-breasted	<i>Sitta canadensis</i>		BOVA, Collections
040264	SS	IV	Creeper, brown	<i>Certhia americana</i>		BOVA
040265			Wren, house	<i>Troglodytes aedon</i>		BOVA
040266	SS	II	Wren, winter	<i>Troglodytes troglodytes</i>		BOVA, Collections
040268			Wren, Carolina	<i>Thryothorus ludovicianus</i>		BOVA
040269		IV	Wren, marsh	<i>Cistothorus palustris</i>	Yes	ObsBook
040271			Mockingbird, northern	<i>Mimus polyglottos</i>		BOVA
040272		IV	Catbird, gray	<i>Dumetella carolinensis</i>		BOVA, Collections
040273		IV	Thrasher, brown	<i>Toxostoma rufum</i>		BOVA
040275			Robin, American	<i>Turdus migratorius</i>		BOVA
040277		IV	Thrush, wood	<i>Hylocichla ustulata</i>		BOVA, Collections
040278	SS		Thrush, hermit	<i>Catharus guttatus</i>		BOVA
040281			Veery	<i>Catharus fuscescens</i>		BOVA, Collections
040282			Bluebird, eastern	<i>Sialia sialis</i>		BOVA
040284			Gnatcatcher, blue-gray	<i>Poliophtila caerulea</i>		BOVA
040285	SS		Kinglet, golden-crowned	<i>Regulus satrapa</i>		BOVA
040286			Kinglet, ruby-crowned	<i>Regulus calendula</i>		BOVA
040287			Pipit, American	<i>Anthus rubescens</i>		BOVA
040290			Waxwing, cedar	<i>Bombycilla cedrorum</i>		BOVA
040291			Shrike, northern	<i>Lanius excubitor</i>		BOVA
040293	ST	I	Shrike, loggerhead	<i>Lanius ludovicianus</i>		BOVA
040294			Starling, European	<i>Sturnus vulgaris</i>		BOVA
040295			Vireo, white-eyed	<i>Vireo griseus</i>		BOVA
040297		IV	Vireo, yellow-throated	<i>Vireo flavifrons</i>		BOVA
040298			Vireo, blue-headed	<i>Vireo solitarius</i>		BOVA
040299			Vireo, red-eyed	<i>Vireo olivaceus</i>		BOVA, Collections
040301			Vireo, warbling	<i>Vireo gilvus gilvus</i>		BOVA
040302		IV	Warbler, black-and-white	<i>Mniotilta varia</i>		BOVA, Collections
040305		IV	Warbler, worm-eating	<i>Helmitheros vermivorus</i>		BOVA, Collections
040307		IV	Warbler, blue-winged	<i>Vermivora pinus</i>		BOVA

http://vafwis.org/fwis/NewPages/VaFWIS_report_search.asp?lastMenu=Home Database+Search&tm=1&ts...

040312	IV	Parula, northern	<i>Parula americana</i>	BOVA
040313	IV	Warbler, yellow	<i>Dendroica petechia</i>	BOVA,ObsBook
040319	I	Warbler, black-throated green	<i>Dendroica virens</i>	BOVA,Collections
040320	II	Warbler, cerulean	<i>Dendroica cerulea</i>	BOVA
040323		Warbler, chestnut-sided	<i>Dendroica pensylvanica</i>	BOVA
040326		Warbler, pine	<i>Dendroica pinus</i>	BOVA
040328	IV	Warbler, prairie	<i>Dendroica discolor</i>	BOVA
040329		Warbler, palm	<i>Dendroica palmarum</i>	BOVA
040330	IV	Ovenbird	<i>Seiurus aurocapilla</i>	BOVA,Collections
040332	IV	Waterthrush, Louisiana	<i>Seiurus motacilla</i>	BOVA
040333	IV	Warbler, Kentucky	<i>Oporornis formosus</i>	BOVA
040336		Yellowthroat, common	<i>Geothlypis trichas</i>	BOVA
040337	IV	Chat, yellow-breasted	<i>Icteria virens virens</i>	BOVA
040338		Warbler, hooded	<i>Wilsonia citrina</i>	BOVA,Collections
040340	IV	Warbler, Canada	<i>Wilsonia canadensis</i>	BOVA,Collections
040341		Redstart, American	<i>Setophaga ruticilla</i>	BOVA,Collections
040342		Sparrow, house	<i>Passer domesticus</i>	BOVA
040344	IV	Meadowlark, eastern	<i>Sturnella magna</i>	BOVA
040346		Blackbird, red-winged	<i>Agelaius phoeniceus</i>	BOVA
040347		Oriole, orchard	<i>Icterus spurius</i>	BOVA,ObsBook
040348		Oriole, Baltimore	<i>Icterus galbula</i>	BOVA
040349	IV	Blackbird, rusty	<i>Euphagus carolinus</i>	BOVA
040350		Blackbird, Brewer's	<i>Euphagus cyanocephalus</i>	BOVA
040352		Grackle, common	<i>Quiscalus quiscula</i>	BOVA
040353		Cowbird, brown-headed	<i>Molothrus ater</i>	BOVA
040355	IV	Tanager, scarlet	<i>Piranga olivacea</i>	BOVA
040356		Tanager, summer	<i>Piranga rubra</i>	BOVA
040357		Cardinal, northern	<i>Cardinalis cardinalis</i>	BOVA
040358	IV	Grosbeak, rose-breasted	<i>Pheucticus ludovicianus</i>	BOVA,Collections
040360		Grosbeak, blue	<i>Guiraca caerulea caerulea</i>	BOVA
040361		Bunting, indigo	<i>Passerina cyanea</i>	BOVA
040365		Grosbeak, evening	<i>Coccothraustes vespertinus</i>	BOVA
040366	SS	Finch, purple	<i>Carpodacus purpureus</i>	BOVA

040367			Finch, house	<i>Carpodacus mexicanus</i>	BOVA
040369			Redpoll, common	<i>Carduelis flammea</i>	BOVA
040370			Siskin, pine	<i>Carduelis pinus</i>	BOVA
040371			Goldfinch, American	<i>Carduelis tristis</i>	BOVA,ObsBook
040372	SS	I	Crossbill, red	<i>Loxia curvirostra</i>	BOVA
040375		IV	Towhee, eastern	<i>Pipilo erythrophthalmus</i>	BOVA,Collections
040377			Sparrow, savannah	<i>Passerculus sandwichensis</i>	BOVA
040378		IV	Sparrow, grasshopper	<i>Ammodramus savaumarum pratensis</i>	BOVA,ObsBook
040383			Sparrow, vesper	<i>Poocetes gramineus</i>	BOVA
040387			Junco, dark-eyed	<i>Junco hyemalis</i>	BOVA,Collections
040388			Sparrow, American tree	<i>Spizella arborea</i>	BOVA,ObsBook
040389			Sparrow, chipping	<i>Spizella passerina</i>	BOVA
040391		IV	Sparrow, field	<i>Spizella pusilla</i>	BOVA
040393			Sparrow, white-crowned	<i>Zonotrichia leucophrys</i>	BOVA
040394			Sparrow, white-throated	<i>Zonotrichia albicollis</i>	BOVA
040395			Sparrow, fox	<i>Passerella iliaca</i>	BOVA
040396			Sparrow, Lincoln's	<i>Melospiza lincolnii</i>	BOVA
040397			Sparrow, swamp	<i>Melospiza georgiana</i>	BOVA
040398			Sparrow, song	<i>Melospiza melodia</i>	BOVA
040401			Bunting, snow	<i>Plectrophenax nivalis nivalis</i>	BOVA
050081		IV	Woodrat, Allegheny	<i>Neotoma magister</i>	BOVA,Collections

• FE=Federal Endangered; FT=Federal Threatened; SE=State Endangered; ST=State Threatened; FP=Federal Proposed; FC=Federal Candidate; FS=Federal Species of Concern; SC=State Candidate; CC=Collection Concern; SS=State Special Concern

** I=VA Wildlife Action Plan - Tier I - Critical Conservation Need; II=VA Wildlife Action Plan - Tier II - Very High Conservation Need; III=VA Wildlife Action Plan - Tier III - High Conservation Need; IV=VA Wildlife Action Plan - Tier IV - Moderate Conservation Need

audit no. 266161 11/3/2009 1:51:44 PM Virginia Fish and Wildlife Information Service
 © 1998-2009 Commonwealth of Virginia Department of Game and Inland Fisheries

C. Support Documents

1. Condensation of Minutes of the Rappahannock County Board of Supervisors Meeting on September 9, 2009, pertaining to Board support of Scenic River designation of the Hughes River within the County.

AT THE REGULAR MEETING OF THE RAPPAHANNOCK COUNTY BOARD OF SUPERVISORS HELD ON THE 9th DAY OF SEPTEMBER, TWO THOUSAND AND NINE AT TWO O’CLOCK P.M. AT THE COURTHOUSE IN WASHINGTON, VIRGINIA

<u>Present</u>	<u>Present</u>	<u>Absent</u>
Robert P Anderson, Chm. Ronald L Frazier, V-Chm. S. Bryant Lee Roger A Welch Edward D. Wayland	John McCarthy, Co. Adm. Peter H. Luke, Co. Attorney Diane Bruce, Clerk	None

An agenda item at the meeting was the:

Scenic River Designation – Hughes River:

The Hughes River has been nominated for designation as a Scenic River.

Department of Conservation and Recreation (DCR) representatives were introduced: Lynn Crump, Environmental Programs Planner, who manages the Scenic River program for DCR, and Richard Gibbons, Chairman of the Virginia Scenic River Advisory Board.

Chairman Robert P. Anderson opened the floor to comments from the public.

There were a number of responses from citizens in attendance – both in favor of the designation and against the designation. Representatives of the organizations RAPPFlow and the Piedmont Environmental Council were also heard. After all comments, both Ms. Crump and Mr. Gibbons provided specific information and answered questions about the program.

There being no further input, Chairman Anderson closed the public comment period.

Following discussion among the Board members, on motion of Mr. Wayland, seconded by Mr. Welch, the Board voted unanimously to recommend Scenic River designation of the Hughes River to the Department of Conservation and Recreation.

The following roll-call was taken: AYE: Anderson, Lee, Welch, Wayland, Frazier. NAY: None. (See numerous letters of support and other documentation filed with papers of meeting.)

2. Culpeper County Resolution of Support

RESOLUTION
IN SUPPORT OF A SCENIC RIVER DESIGNATION
FOR THE HUGHES RIVER

WHEREAS, a portion of the Hughes River lies along the boundary between the Counties of Culpeper and Rappahannock; and

WHEREAS, Rappahannock County initiated a study, carried out by the Virginia Department of Conservation and Recreation (DCR) to determine if the Hughes River would be eligible for designation as a Virginia Scenic River; and

WHEREAS, DCR performed such a study and concluded that the Hughes River, from the Shenandoah National Park boundary line in Madison County to its confluence with the Hazel River does qualify as a Virginia Scenic River; and

WHEREAS, The Culpeper County Board of Supervisors recognizes that while such a designation has no regulatory impact, the designation is beneficial in recognizing important natural resources statewide;

NOW THEREFORE, BE IT RESOLVED THAT: The Culpeper County Board of Supervisors hereby support this designation of the identified portion of the Hughes River as a Virginia Scenic River.

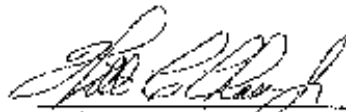
ADOPTED this 7th day of July 2009.

VOTING AYE: Mr. Aylor, Mrs. Hansohn, Mr. Nixon, Mr. Rosenberger, Mr. Walker

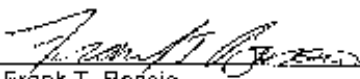
VOTING NAY: Mr. Chase, Mr. Underwood

ABSTAINING: None

ABSENT: None



William C. Chase, Jr., Chairman
Board of Supervisors

Attest: 

Frank T. Bossio

3. Virginia Scenic River Advisory Board Support:

The minutes of the May 14, 2009, Virginia Scenic River Advisory Board meeting state that the Board recommends that selected portions of the Hughes, Jordan and Blackwater Rivers be advanced for designation as Virginia Scenic Rivers. Specifically, the Hughes River segment is identified as from the Shenandoah National Park boundary to its confluence with the Hazel River, a distance of 10 miles.

D. Proposed Legislation

Proposed Legislation for the Scenic River Designation of the Hughes River in Rappahannock, Madison and Culpeper Counties

VIRGINIA ACTS OF ASSEMBLY – 2010 SESSION
CHAPTER 4

A Bill to amend the *Code of Virginia* by adding in Chapter 4 of Title 10.1 a section numbered § 10.1-418.6. , relating to designation of the Hughes River as a State Scenic River.

To be it enacted by the General Assembly of Virginia: § 10.1-418.6 as follows:

§ 10.1-418.6. Hughes River State Scenic River.

The Hughes River within Madison, Rappahannock and Culpeper Counties, from the Shenandoah National Park line in Madison County to its confluence with the Hazel River, a distance of approximately 10 miles, is hereby designated a component of the Virginia Scenic Rivers System. Nothing in this section shall preclude the Commonwealth or a local governing body from constructing, reconstructing, or performing necessary maintenance on any road or bridge.