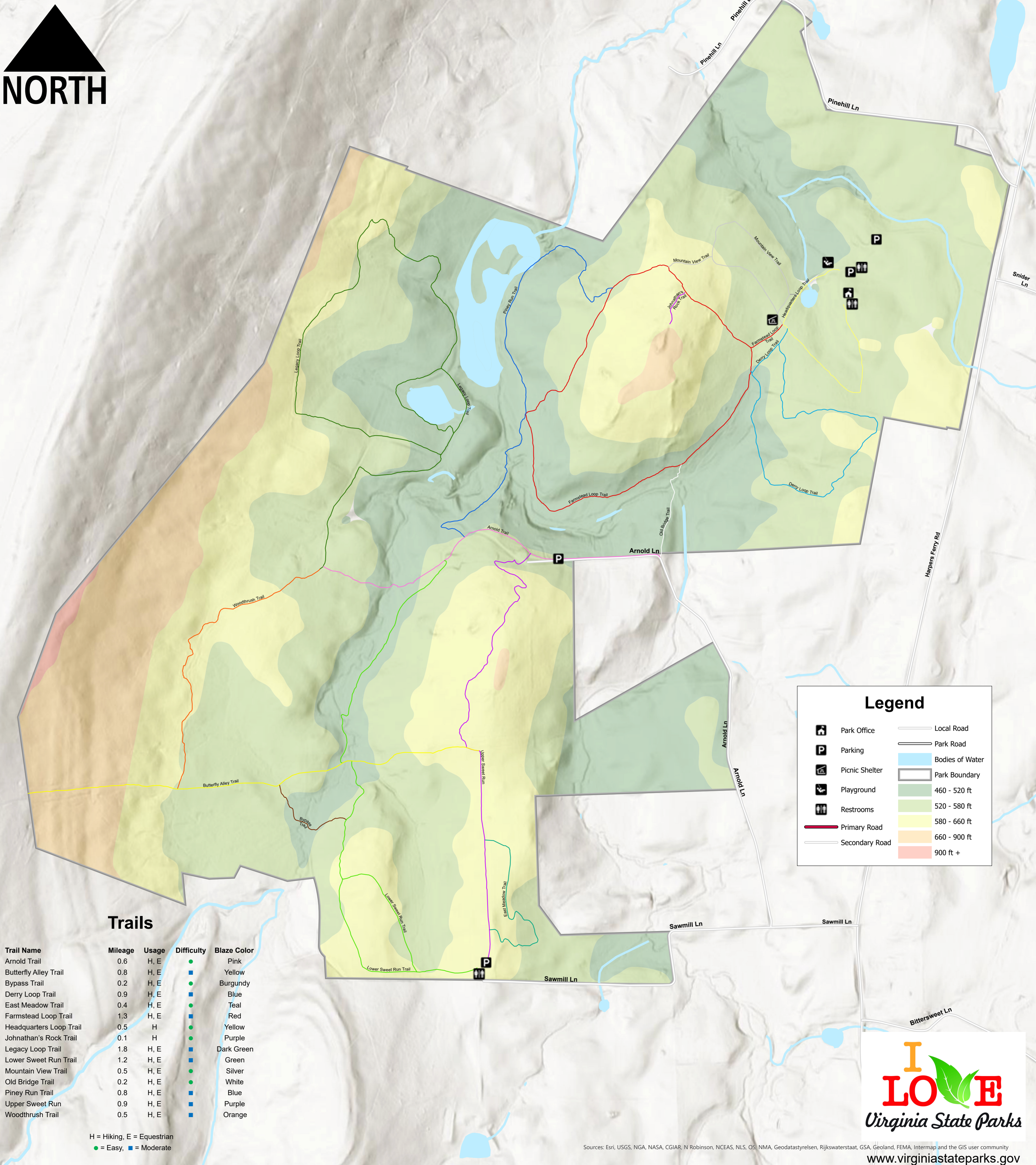


Sweet Run State Park



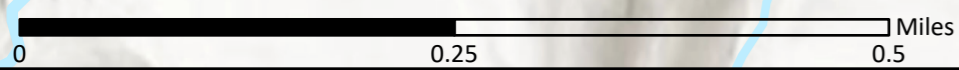
Trails

Trail Name	Mileage	Usage	Difficulty	Blaze Color
Arnold Trail	0.6	H, E	●	Pink
Butterfly Alley Trail	0.8	H, E	■	Yellow
Bypass Trail	0.2	H, E	●	Burgundy
Derry Loop Trail	0.9	H, E	■	Blue
East Meadow Trail	0.4	H, E	●	Teal
Farmstead Loop Trail	1.3	H, E	■	Red
Headquarters Loop Trail	0.5	H	●	Yellow
Johnathan's Rock Trail	0.1	H	●	Purple
Legacy Loop Trail	1.8	H, E	■	Dark Green
Lower Sweet Run Trail	1.2	H, E	■	Green
Mountain View Trail	0.5	H, E	●	Silver
Old Bridge Trail	0.2	H, E	●	White
Piney Run Trail	0.8	H, E	■	Blue
Upper Sweet Run	0.9	H, E	■	Purple
Woodthrus Trail	0.5	H, E	■	Orange

H = Hiking, E = Equestrian
 ● = Easy, ■ = Moderate

Legend

	Park Office		Local Road
	Parking		Park Road
	Picnic Shelter		Bodies of Water
	Playground		Park Boundary
	Restrooms		460 - 520 ft
	Primary Road		520 - 580 ft
	Secondary Road		580 - 660 ft
			660 - 900 ft
			900 ft +



Sources: Esri, USGS, NGA, NASA, CGIAR, N Robinson, NCEAS, NLS, OS, NMA, Geodastystyrelsen, Rijkswaterstaat, GSA, Geoland, FEMA, Intermap and the GIS user community



www.virginiastateparks.gov
 1-800-933-7275