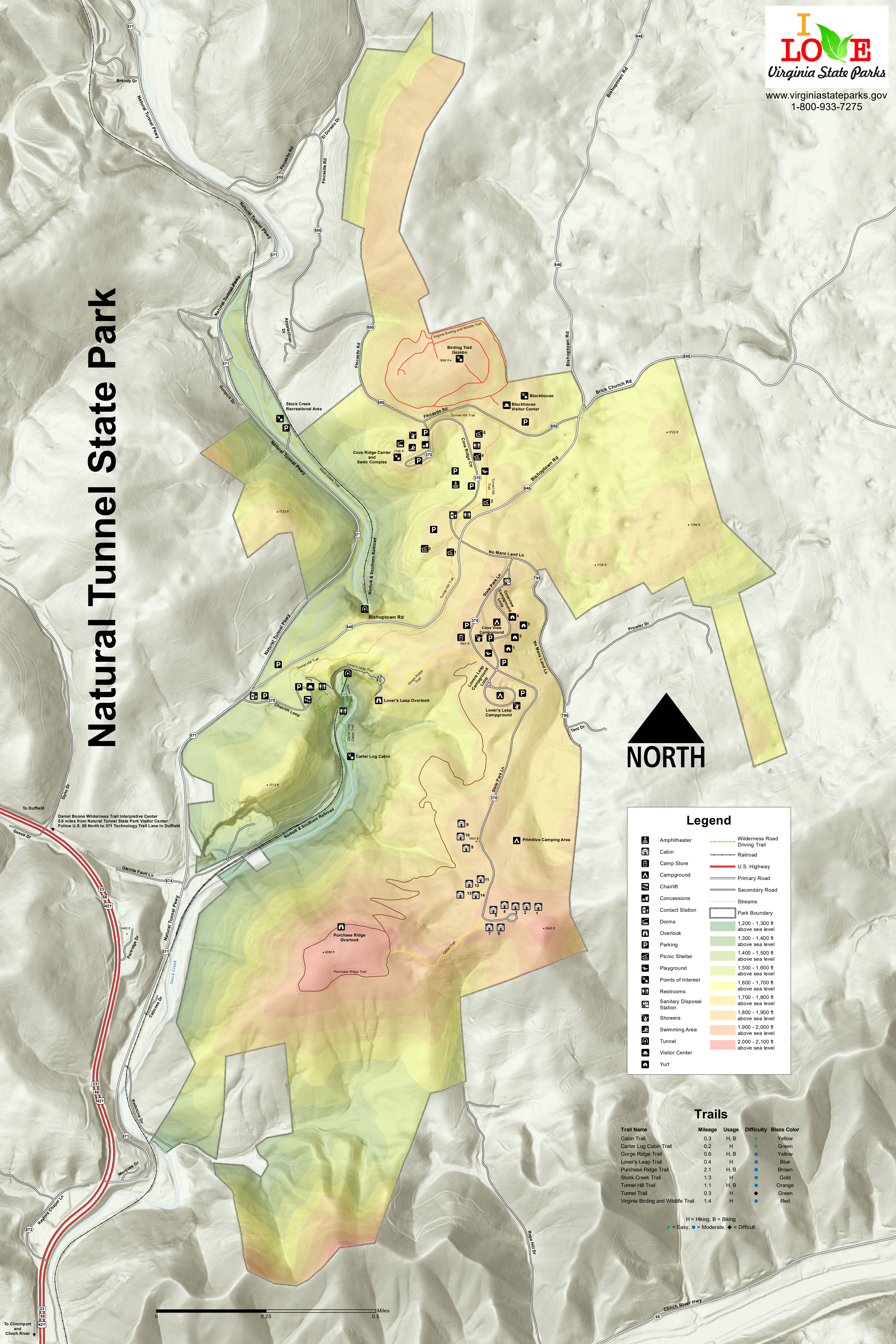


Natural Tunnel State Park



Legend

	Amphitheater		Wilderness Road Driving Trail
	Cabin		Railroad
	Camp Store		U.S. Highway
	Campground		Primary Road
	Chairlift		Secondary Road
	Concessions		Streams
	Contact Station		Park Boundary
	Dorms		1,200 - 1,300 ft above sea level
	Overlook		1,300 - 1,400 ft above sea level
	Parking		1,400 - 1,500 ft above sea level
	Picnic Shelter		1,500 - 1,600 ft above sea level
	Playground		1,600 - 1,700 ft above sea level
	Points of Interest		1,700 - 1,800 ft above sea level
	Restrooms		1,800 - 1,900 ft above sea level
	Sanitary Disposal Station		1,900 - 2,000 ft above sea level
	Showers		2,000 - 2,100 ft above sea level
	Swimming Area		
	Tunnel		
	Visitor Center		
	Yurt		
	Primitive Camping Area		

Trails

Trail Name	Mileage	Usage	Difficulty	Blaze Color
Cabin Trail	0.3	H, B	●	Yellow
Carter Log Cabin Trail	0.2	H	●	Green
Gorge Ridge Trail	0.6	H, B	■	Yellow
Lover's Leap Trail	0.4	H	■	Blue
Purchase Ridge Trail	2.1	H, B	■	Brown
Stock Creek Trail	1.3	H	■	Gold
Tunnel Hill Trail	1.1	H, B	■	Orange
Tunnel Trail	0.3	H	◆	Green
Virginia Birding and Wildlife Trail	1.4	H	■	Red

H = Hiking, B = Biking
● = Easy, ■ = Moderate, ◆ = Difficult

To Clinchport and Clinch River

